

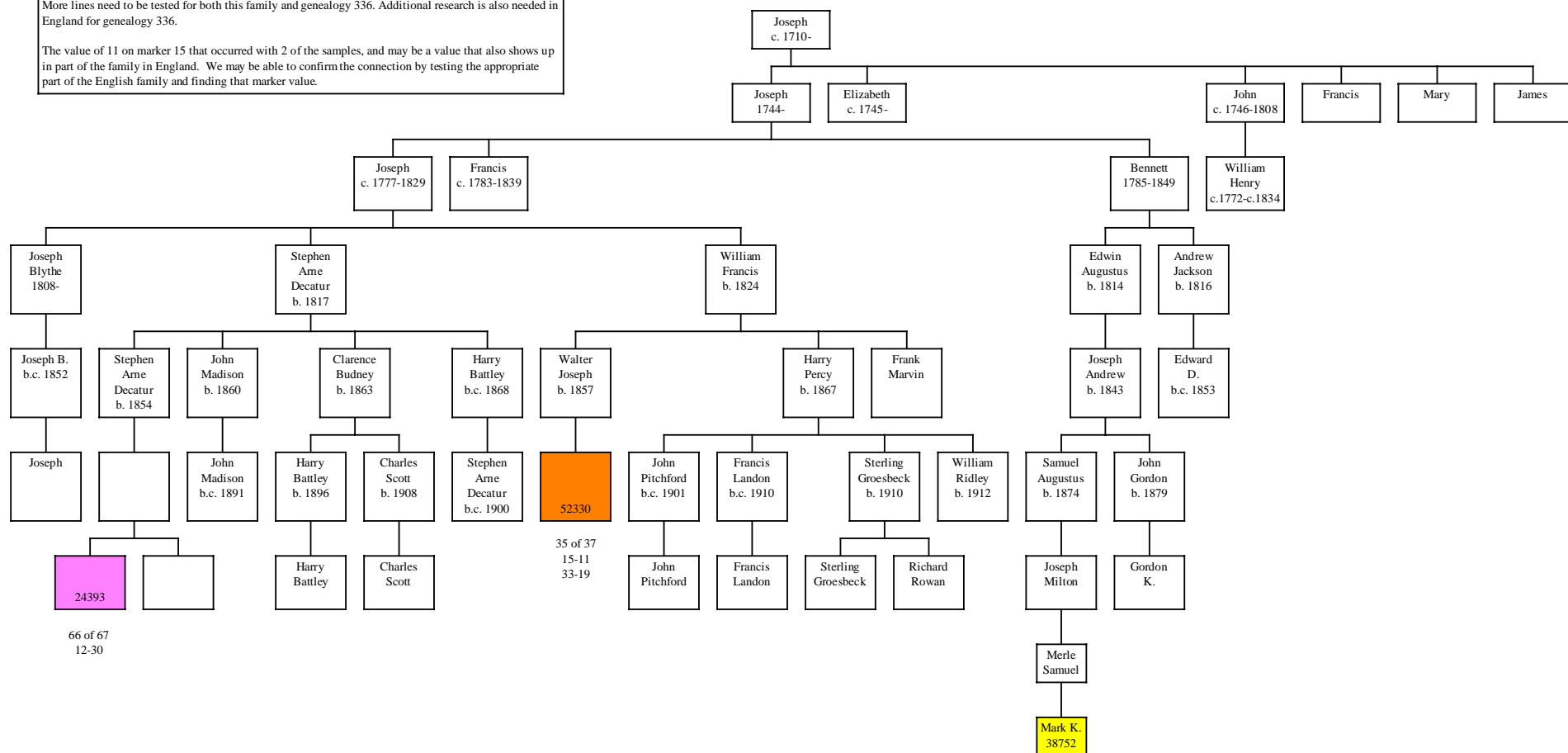
Descendants of Joseph Greaves of England & SC (Gen. 156)

(Rev. 5 Dec. 2007)

This Greaves family is descended from the family of Peter Greaves of Greenhill, Norton, South Yorkshire, England, or from a common ancestor with that family, based on the results of the Graves/Greaves DNA study. The exact connection isn't known, but a note on the chart for genealogy 336 shows where the connection may be.

More lines need to be tested for both this family and genealogy 336. Additional research is also needed in England for genealogy 336.

The value of 11 on marker 15 that occurred with 2 of the samples, and may be a value that also shows up in part of the family in England. We may be able to confirm the connection by testing the appropriate part of the English family and finding that marker value.



66 of 67
12-30

35 of 37
15-11
33-19

34 of 37
15-11
33-17
35-38

NOTES: This chart shows male lines of descent only, since the focus is on using Y-DNA analysis to trace the Graves surname.
The number in each bottom colored box is the DNA test ID.
When two descendants of a common ancestor have exactly the same DNA test results, it is assumed that the common ancestor also had that result, and all boxes up to and including the common ancestor have been given the same color. All boxes with the same color have the same DNA test results.
24 of 25 means that 24 of the 25 markers matched the inferred ancestral haplotype.
A notation like 13-19 indicates a mutation from the ancestral haplotype, and means marker 13 had a value of 19.