

THE GRAVES FAMILY NEWSLETTER

Official Publication of the Graves Family Association

For all families of Graves, Greaves, Grave, and other spelling variations everywhere

CONTENTS

Graves Family News.....	25
Address Changes	25
Membership Directory Updates	25
War Casualties of U.S. Graves, Greaves, Grieve & Grieves Family Members	26
Graves Family of Gloucester Co. & Halifax Co., VA, TN, MO, AR & TX, Descended from Capt. Thomas Graves of VA (or maybe not)	31
Descendants of Parents of Alva Graves of TN & MO	41
Questions and Information.....	43
Descendants of Harry Albert Graves and Mary Anna Maxwell of NS, Canada & MA.....	43
Descendants of John Graves and Delilah Smith of NH & MA	44
Descendants of Thomas Graves of NC & Pulaski Co., KY.....	45

buried Tuesday, April 16, 2002 in Swiss Cemetery beside his father.

ADDRESS CHANGES

Mr. Keith W. Graves of Midlothian, VA, descended from Capt. THOMAS GRAVES of VA, has moved to 14008 Sagebrook Rd., Midlothian, VA 23112-4230.

Mr. William G. Graves II, descended from Capt. THOMAS GRAVES of VA, has moved from Whippany, NJ to 154 Pine St., Franklin, MA 02038-2657.

Mr. William L. Wells, descended from WILLIAM GRAVES and Sarah Ford of SC & MS, has moved from Madison, MS to 350 Chapel Hills Rd., Flora, MS 39071.

Mrs. Mary H. Lively of Louisville, KY, descended from Capt. THOMAS GRAVES of VA, has moved to 7334 Patrick Henry Rd., Apt. 1, Louisville, KY 40214-5223.

GRAVES FAMILY NEWS

Mrs. W. B. (Imogene) Parsley, 10908 Melton View Lane, Knoxville, TN 37931, descended from THOMAS GRAVES of NC & Maury Co., TN, sent the sad news that her brother, **Clyde Edward Rasbury**, son of Clyde Rasbury and Marie Graves, died April 13, 2002. He was born Nov. 22, 1930 and was

MEMBERSHIP DIRECTORY UPDATES

New Members

GRAVES, Mr. Gordon I.
308 Glenn Ave., Boiling Springs, PA 17007-9775
Ancestry: Rear Adm. Thomas Graves of Charlestown, MA

STREET, Mrs. Myra S.

4754 Main St., Hokes Bluff, AL 35903-4703
Ancestry: John Douglas Graves and Mary Magdalene
Zeigler of GA & AL

WAR CASUALTIES OF U.S. GRAVES, GREAVES, GRIEVE & GRIEVES FAMILY MEMBERS

Memberships:

Regular (U.S. & Canada) \$20/year
Other countries (air mail) \$30/year
Sustaining (U.S. & Canada) \$40/year
Other countries (air mail) \$50/year
Life (U.S./Canada, no age limit) \$600 one time
Foreign memberships must be paid by money order in U.S. dollars. All back issues (1976-present) are available, last year at current price and earlier years at half price.

Newsletter only available to individuals as part of Graves Family Association membership. No charge for queries.

Published by:

THE GRAVES FAMILY ASSOCIATION
20 Binney Circle, Wrentham, MA 02093, USA
Internet Web Site: <http://www.gravesfa.org>

Newsletter Editor: Kenneth Vance Graves
20 Binney Circle, Wrentham, MA 02093
(508)384-8084
ken.graves@gravesfa.org

Treasurer: Sarah J. Graves, Wrentham, MA
sarah.graves@gravesfa.org

Director, Internet Web Site:

Kenneth Vance Graves

Graves Online List Manager: Marjorie Ferris,
Rialto, CA, MBFerris@aol.com

Research Coordinators

Graves of Cambridgeshire, England: Nedra
Dickman Brill, CG, 2410 NE 58th Ave.,
Portland, OR 97213-4002
brillnd@pacifier.com

Rear Admiral Thomas Graves of Charlestown,
MA and his Greaves family of Stepney,
London, England: **Raymond C. Flesher, 313**
West Lehow Ave., #24, Englewood, CO
80110-6744, rcflesher@juno.com

Charles Newton Graves (Descended from Rear
Admiral Thomas Graves of Charlestown,
MA): **Janet Craw, HC 4, Box 23B, Payson,**
AZ 85541-9531, vjcraw@cybertrails.com

Samuel Graves of Lynn, MA: Carol Kenney
Graves, 4121 North Koerner Rd., Peoria, IL
61615, ckennedy7@aol.com

© Graves Family Association, 2001

A recent issue of the newsletter of the Vance Family Association about Vances listed by the American Battle Monuments Commission has prompted me to include a similar list of Graves, etc. family members on the ABMC rolls.

The American Battle Monuments Commission is a small independent agency of the Executive Branch of the federal government. It is responsible for commemorating the services of the American Armed Forces where they have served since April 6, 1917 (the date of U.S. entry into World War I) through the establishment of suitable memorial shrines; designing, constructing, operating and maintaining permanent American military burial grounds in foreign countries. It is also responsible for controlling the design and construction of U.S. military monuments and markers in foreign countries by other U.S. citizens and organizations, both public and private; and encouraging the maintenance of such monuments and markers by their sponsors.

The Commission administers, operates, and maintains twenty-four permanent American burial grounds on foreign soil. Presently there are 124,913 U.S. War Dead interred at these cemeteries, 30,921 of World War I, 93,242 of World War II and 750 of the Mexican War. Additionally 5,857 American veterans and others are interred in the Mexico City and Corozal American Cemeteries. These cemeteries are: Aisne-Marne, France; Ardennes, Belgium; Brittany, France; Brookwood, England; Cambridge, England; Corozal, Panama; Epinal, France; Flanders Field, Belgium; Florence, Italy; Henri-Chapelle, Belgium; Luxembourg,

Luxembourg; Lorraine, France; Manila, Philippines; Meuse-Argonne, France; Mexico City, Mexico; Netherlands, Netherlands; Normandy, France; North Africa, Tunisia; Oise-Aisne, France; Rhone, France; Sicily-Rome, Italy; Somme, France; St. Mihiel, France; Suresnes, France.

The American Battle Monuments Commission website is <http://www.abmc.gov/> The website contains the following people named Graves and variations of that name who died in service to their country by the war in which they served. This is by no means a complete list of all Americans who served in the U.S. Armed Forces or even all those who died in the wars covered. It only includes those commemorated by the ABMC. In this issue the World War I and Korean War casualties will be listed, and next issue will have those from World War II.

If you can identify any of these people and their ancestry, or provide any additional information about any of them, please let me know. It is planned to put this information on the Graves Family Association website. At some future date, I would also like to include all casualties in the wars, plus perhaps those who fought in the American Revolution and in the Civil War. Your help will be appreciated.

WORLD WAR I CASUALTIES

Alva N. Graves

Private First Class, U.S. Army, 2nd Engineer Regiment, 2nd Infantry Division. Entered the Service from Colorado. Died June 14, 1918. Missing in Action or Buried at Sea. Tablets of the Missing at Aisne-Marne American Cemetery, Belleau, France

Benton Graves

Private, U.S. Army, 142nd Infantry Regiment, 36th Infantry Division. Entered the Service from Texas. Died October 8, 1918. Buried Plot D Row 09 Grave 40, Meuse-Argonne

American Cemetery, Romagne, France.
Awards: French Croix de Guerre.

Charles J. Graves

Field Musician, Third Class, U.S. Navy, USS Ticonderoga. Entered the Service from Massachusetts. Died September 30, 1918. Missing in Action or Buried at Sea. Tablets of the Missing at Suresnes American Cemetery, Suresnes, France.

Claude P. Graves

Private First Class, U.S. Army, 16th Infantry Regiment, 1st Infantry Division. Entered the Service from New Mexico. Died July 24, 1918. Missing in Action or Buried at Sea. Tablets of the Missing at Aisne-Marne American Cemetery, Belleau, France.

Clifford T. Graves

Private, U.S. Army, 309th Infantry Regiment, 78th Infantry Division. Entered the Service from New Jersey. Died October 26, 1918. Buried Plot F Row 39 Grave 14, Meuse-Argonne American Cemetery, Romagne, France

Fred B. Graves

Private, U.S. Army, 88th Base Hospital. Entered the Service from Oklahoma. Died October 3, 1918. Buried Plot A Row 23 Grave 09 Oise-Aisne American Cemetery, Fere-en-Tardenois, France.

Henry H. Graves

Yeoman, Second Class, U.S. Navy, USS Ticonderoga. Entered the Service from Mississippi. Died September 30, 1918. Missing in Action or Buried at Sea. Tablets of the Missing at Suresnes American Cemetery, Suresnes, France.

Irving L. Graves

Private First Class, U.S. Army, 9th Field Signal Battalion, 5th Infantry Division. Entered the Service from Minnesota. Died November 12, 1918. Buried at Plot A Row 07

Grave 16, Meuse-Argonne American Cemetery, Romagne, France.

Lenson C. Graves

Sergeant, U.S. Army, 118th Infantry Regiment, 30th Infantry Division. Entered the Service from South Carolina. Died October 8, 1918. Buried at Plot A Row 14 Grave 05, Somme American Cemetery, Bony, France

Lloyd M. Graves

Private, U.S. Army, 323rd Infantry Regiment, 81st Infantry Division. Entered the Service from Indiana. Died November 9, 1918. Buried Plot D Row 26 Grave 14, St. Mihiel American Cemetery, Thiaucourt, France

Paul Graves

Corporal, U.S. Army, 359th Infantry Regiment, 90th Infantry Division. Entered the Service from Texas. Died November 9, 1918. Buried Plot C Row 18 Grave 19, St. Mihiel American Cemetery, Thiaucourt, France.

Theodore E. Graves

Private, U.S. Army, 137th Infantry Regiment, 35th Infantry Division, Entered the Service from Nebraska. Died September 27, 1918. Buried Plot G Row 36 Grave 08, Meuse-Argonne American Cemetery, Romagne, France.

Thomas J. Graves

Private, U.S. Army, 142nd Infantry Regiment, 36th Infantry Division. Entered the Service from Oklahoma. Died October 8, 1918. Buried Plot D Row 34 Grave 26, Meuse-Argonne American Cemetery, Romagne, France.

Warren V. Graves

Private, U.S. Army, 111th Infantry Regiment, 28th Infantry Division. Entered the Service from Pennsylvania. Died August 11, 1918. Buried Plot B Row 07 Grave 35, Aisne-Marne American Cemetery, Belleau, France.

Willie B. Graves

Private, U.S. Army, 426th Motorized Supply Trains. Entered the Service from Tennessee. Died October 10, 1918. Missing in Action or Buried at Sea, Tablets of the Missing at Suresnes American Cemetery, Suresnes, France.

John G. Greaves

Private First Class, U.S. Army, 7th Field Artillery Regiment, 1st Infantry Division. Entered the Service from New Jersey. Died October 28, 1918. Buried Plot G Row 15 Grave 11, Meuse-Argonne American Cemetery, Romagne, France.

Percy Greaves

Private, U.S. Army, 166th Infantry Regiment, 42nd Infantry Division. Entered the Service from Pennsylvania. Died October 29, 1918. Buried Plot B Row 29 Grave 15, Meuse-Argonne American Cemetery, Romagne, France.

Perley F. Greaves

Private, U.S. Army, 103rd Infantry Regiment, 26th Infantry Division. Entered the Service from Vermont. Died July 20, 1918. Buried Plot A Row 10 Grave 64, Aisne-Marne American Cemetery, Belleau, France.

William E. Grieve

Corporal, U.S. Marine Corps, 6th USMC Regiment, 2nd Infantry Division. Entered the Service from Illinois. Died September 15, 1918. Missing in Action or Buried at Sea, Tablets of the Missing at St. Mihiel American Cemetery, Thiaucourt, France.

KOREAN WAR CASUALTIES

Ben Henry Graves

Comanche, Oklahoma, Born 1932, Sergeant, U.S. Army. Died while Prisoner of War. Died February 28, 1951 in Korea. Sergeant Graves was a member of Headquarters and Headquarters Company, 31st Infantry Regiment, 7th Infantry Division. He was taken Prisoner of War while fighting the enemy in North Korea on November 28, 1950 and died while a prisoner on February 28, 1951. Sergeant Graves was awarded the Korean Service Medal and the United Nations Service Medal.

Clarence L. Graves

Birthplace unknown, Born Unknown, Staff Sergeant, U.S. Air Force. Non-hostile Air Crash, Died September 1, 1950 in United States. Staff Sergeant Graves was a passenger on a C-119C troop transport based at Stewart Air Force Base, Smyrna, Tennessee. On September 1, 1950, the aircraft was flying from Stewart AFB to Castle Air Force Base, California when it experienced engine trouble and crashed near Parsons, Tennessee, killing four crew members and three passengers. Staff Sergeant Graves was awarded the National Defense Service Medal.

Frederick H. Graves, Jr.

Norfolk, Massachusetts, Born 1924, Corporal, U.S. Army. Killed in Action, Died August 13, 1950 in Korea. Corporal Graves was a member of Company D, 7th Cavalry Regiment, 1st Cavalry Division. He was killed in Action while fighting the enemy in South Korea on August 13, 1950. Corporal Graves was awarded the Purple Heart posthumously.

Frederick W. Graves

Beaufort, South Carolina, Born 1927, Corporal, U.S. Army. Killed in Action, Died August 31, 1951 in Korea. Corporal Graves was a member of the 9th Infantry Regiment, 2nd Infantry Division. He was Killed in Action while fighting the enemy in North Korea on August 31, 1951. Corporal Graves was awarded the Purple Heart posthumously.

Jack N. Graves

San Francisco, California, Born 1933, Private, U.S. Army. Killed in Action, Died January 22, 1951 in Korea. Private Graves was a member of the 17th Infantry Regiment, 7th Infantry Division. He was Killed in Action while fighting the enemy in South Korea on January 22, 1951. Private Graves was awarded the Purple Heart posthumously.

Lee A. Graves

Shawnee, Kansas, Born 1909, Chief Warrant Officer, U.S. Army. Killed in Action, Died September 29, 1951 in Korea. Chief Warrant Officer Graves was a member of the 15th Infantry Regiment, 3rd Infantry Division. He was Killed in Action while fighting the enemy in North Korea on September 29, 1951. Chief Warrant Officer Graves was awarded the Purple Heart posthumously.

Marion Graves

Jasper, South Carolina, Born 1931, Private First Class, U.S. Army. Killed in Action, Died September 29, 1952 in Korea. Private First Class Graves was a member of the 180th Infantry Regiment, 45th Infantry Division. He was Killed in Action while fighting the enemy in North Korea on September 29, 1952. Private First Class Graves was awarded the Purple Heart posthumously.

Nelson L. Graves

Philadelphia, Pennsylvania, Born 1928, Private First Class, U.S. Army. Killed in Action, Died September 19, 1951 in Korea. Private First Class Graves was a member of the 23rd Infantry Regiment, 2nd Infantry Division. He was Killed in Action while fighting the enemy in North Korea on September 19, 1951. Private First Class Graves was awarded the Purple Heart posthumously.

Paul A. Graves

Jackson, Oklahoma, Born 1933, Private, U.S. Army. Killed in Action, Died November 5, 1951 in Korea. Private Graves was a member

of Company B, 7th Cavalry Regiment, 1st Cavalry Division. He was Killed in Action while fighting the enemy in North Korea on November 5, 1951. Private Graves was awarded the Purple Heart posthumously.

Paul E. Graves

Warrick, Indiana, Born 1929, Private First Class, U.S. Army. Killed in Action, Died September 20, 1950 in Korea. Private First Class Graves was a member of Company F, 7th Cavalry Regiment, 1st Cavalry Division. He was Killed in Action while fighting the enemy in South Korea on September 20, 1950. Private First Class Graves was awarded the Purple Heart posthumously.

Riley W. Graves

Bell, Texas, born 1929, Private First Class, U.S. Army. Killed in Action. Died December 1, 1950 in Korea. Private First Class Graves was a member of Headquarters and Headquarters Company, 31st Infantry Regiment, 7th Infantry Division. He was Killed in Action while fighting the enemy in North Korea on December 1, 1950. Private First Class Graves was awarded the Purple Heart, the Korean Service Medal and the United Nations Service Medal.

Robert Edwin Graves

Muscogee, Georgia, born 1922, Sergeant, U.S. Army. Died while Prisoner of War. Died February 26, 1951 in Korea. Sergeant Graves was a member of Headquarters Company, 5th Cavalry Regiment, 1st Cavalry Division. He was taken Prisoner of War while fighting the enemy in North Korea on November 28, 1950 and died while a prisoner on February 26, 1951. Sergeant Graves was awarded the Korean Service Medal and the United Nations Service Medal.

Wilbur J. Graves

San Francisco, California, born 1929, Second Lieutenant, U.S. Army. Killed in Action. Died June 26, 1953 in Korea. Second Lieutenant Graves was a member of the 72nd Tank

Battalion, 2nd Infantry Division. He was Killed in Action while fighting the enemy in North Korea on June 26, 1953. Second Lieutenant Graves was awarded the Purple Heart posthumously.

William E. Graves

Gloucester, New Jersey, born 1919, Captain, U.S. Army. Died of Wounds. Died November 30, 1950 in Korea. Captain Graves was a member of the 35th Infantry Regiment, 25th Infantry Division. He was seriously wounded by the enemy in South Korea on November 27, 1950 and died of those wounds on November 30, 1950. Captain Graves was awarded the Purple Heart posthumously.

Winston Graves

Walthall, Mississippi, born 1926, Sergeant, U.S. Army. Died while Prisoner of War. Died March 24, 1951 in Korea. Initially, Sergeant Graves was a member of the 29th Infantry Regimental Combat Team. He was seriously wounded by the enemy in South Korea on September 10, 1950 and returned to duty on September 22, 1950. He was transferred to the 35th Infantry regiment, 25th infantry Division. He was taken Prisoner of War while fighting the enemy in North Korea on November 28, 1950 and died while a prisoner on March 24, 1951.

Robert Greaves, Jr.

West Alexander, Pennsylvania, born January 11, 1933, Private First Class, U.S. Marine Corps. Non-hostile Death. Died July 30, 1952 in Korea. Private First Class Greaves was a member of Company A, 1st Battalion, 5th Marines, 1st Marine Division. He died in Korea from other causes on July 30, 1952.

John Dale Grieve

Kings, New York, born 1917, Second Lieutenant, U.S. Army. Died while Prisoner of War. Died March 31, 1951 in Korea. Second Lieutenant Grieve was a member of the 38th

Infantry Regiment, 2nd Infantry Division. He was taken Prisoner of War while fighting the enemy in South Korea on November 28, 1950 and died while a prisoner on March 31, 1951.

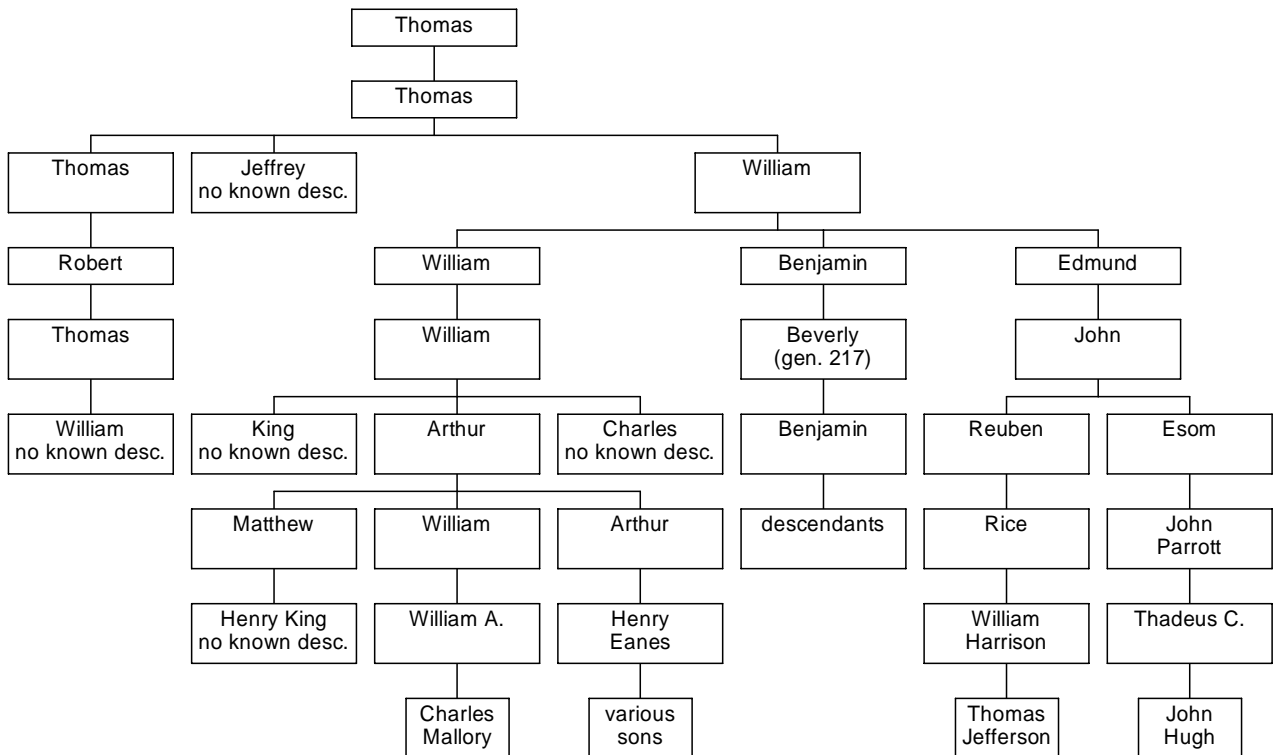
GRAVES FAMILY OF GLOUCESTER CO. & HALIFAX CO., VA, TN, MO, AR & TX, DESCENDED FROM CAPT. THOMAS GRAVES OF VA

This part of the family is believed to descend from Capt. THOMAS GRAVES of VA via Thomas¹, Thomas², William³,

Edmund⁴, John⁵. Very little is known about the descendants of Thomas² Graves. The descendants of John⁵ Graves is the most complete line, and even it is missing much information. Generations 3 through 8 are given below. All additional information and any corrections will be much appreciated.

The chart below should help to understand this part of the family, both proven and hypothesized. It is now apparent from the DNA results discussed below that some of these relationships are not correct.

Descendants of Capt. Thomas Graves of VA (via son Thomas)



The test results from one DNA sample for a descendant of Thomas² Graves, for the line of John⁵ Graves, have now been received (for a descendant of Esom Graves). Surprisingly, the test results do not match those for other descendants of Capt. Thomas Graves.

However, the test results are an exact match to Beverly Graves of Caroline Co., VA (gen. 217) and Archibald Pratt Graves and Martha Jane Caulder of SC (gen. 851).

There are several possible explanations for this situation. *Adventurers of Purse and Person*, 3rd edition, page 327, states that

Thomas² had sons Thomas, Jeffrey and perhaps William. Although all 3 sons lived in Abingdon Parish, Gloucester Co., perhaps William³ was not a son of Thomas². This same source on page 332 lists living sons of William³ as William and John (see also discussion in generation 3 below, regarding the gap in baptismal records). Perhaps Edmund and Benjamin weren't his sons. This latter possibility could be explored by using DNA testing on descendants of William⁴. If they matched genealogy 169 (Capt. Thomas Graves) and not genealogy 217 (Beverly Graves) that would support Edmund and Benjamin not being sons of William³.

Another way DNA testing could help would be to find and test male descendants of Thomas³ or Jeffrey³, or to test male descendants of William⁴, who are known to exist.

GENERATION 3

William Graves (15) married Mary -----. They lived in Abingdon Parish, Gloucester Co., Va. The baptisms of all the following children were recorded in the records of St. Peter's Church, Abingdon Parish. The gap in the baptismal dates of the following children is suspicious, but perhaps the family was not of the parish from 1689 to 1700. (R-14, R-515)

Children - Graves

- 52. John Graves, bapt. 26 Dec. 1686, d. early.
- +53. William Graves, bapt. 29 April 1688, m. Martha (or Elizabeth?) -----, d. by Oct. 1756.
- 54. John Graves, bapt. 5 June 1689, m. Elizabeth -----.
- 55. Benjamin Graves, bapt. 28 April 1700.
- 56. Rebecca Graves, bapt. 27 Sept. 1702.
- 57. Robert Graves, bapt. 4 Feb. 1704.
- 58. Susanna Graves, bapt. 6 April 1707.
- +59. Edmund Graves, bapt. 4 Jan. 1709, married.

GENERATION 4

William Graves (53) was baptized 29 April 1688 in St. Peter's Church, Abingdon Parish, Gloucester Co., Va. He married Martha ----- (His wife's name is given as Elizabeth in a Chesterfield Co., Va. deed.) They settled in Chesterfield Co., Va. His will, probated Oct. 1756, names his son William and Henry Marshall as executors, and mentions his grandsons Pliny and Arthur. (R-515)

Children - Graves

- +132. William Graves, b. 4 July 1725, m. Sarah Cox, d. 24 Jan. 1776.

Edmund Graves (59) was baptized 4 Jan. 1709. An Edmund Graves appeared in Caroline Co., Va. records in the 1730's as a carpenter. In 1752 a John Graves appeared there and was involved in several lawsuits over the next several years. Although there is no documentation, descendants feel this is the line of Reuben, Esom, etc., of Halifax Co., Va. (R-14)

Children - Graves

- +133. John Graves, b.c. 1735, married.

GENERATION 5

John Graves (133) was born about 1735. He moved to Halifax Co., Va. in 1771. Two of his sons, Easom (or Esom) and Reuben, moved to Jackson Co., Tenn. about 1800.

The family of Alva Graves (genealogy 140) was apparently connected with this family. Alva was probably a grandson of John Graves, probably a son of William Graves (#321), but possibly of Winfield Graves (#322). (R-41, R-43)

Children - Graves

- +317. Reuben Graves, b. 23 May 1760, m. Elizabeth Yarbrough, 28 Nov. 1786.
- +318. Esom Graves, b.c. 1764, m. Judith Parrott, 11 Jan. 1787, d. 1843.
- 319. Polly Graves, m. Akin Roberts, 1794.
- 320. Frances Graves, m. Jon Shepard.
- 321. William Graves, m. Rebeckah East, 27 March 1781.
- 322. Winfield Graves

GENERATION 6

Reuben Graves (317) was born 23 May 1760 in Spotsylvania Co., VA. He married Elizabeth Yarbrough on 28 Nov. 1786. He may have secondly married Rhoda -----.

From *Genealogical Abstracts of Revolutionary War Pension Files*, vol. II:FM: "Graves, Reuben, S-3408, Virginia Line, sol lived in Halifax County, Virginia enl, sol was born 23 May 1760 in Spotsylvania County, Virginia, in 1805 he moved to Wartrace Creek in Jackson County, Tennessee and he applied there 2 October 1832 aged 72. Rhoda former widow W3542, MA line, See Silas Ball." (R-213)

Children - Graves

- +830. Rice Graves, b.c. 1790-92, m. Candice -----.
- 831. Harrison Graves
- 832. Marshall Graves
- 833. Nancy Graves, m. ----- Moreland.
- 834. Lucy Graves, m. ----- Sweezy.
- 835. Patsey Graves, never married.
- 836. Edna Graves, m. George Teele. They had at least one daughter, Elvira Elizabeth Teele, who married Wade Hampton Graves (#2260), her second cousin.

Esom (or Easom) Graves (318) was born about 1764, probably in Halifax Co., Va., and died in 1843 in Tenn. He married Judith Parrott, daughter of John Parrott and Ruth -----, on 11 Jan. 1787 in Halifax Co., Va. She was born about 1776.

Their marriage was recorded in the Daily Marriage Book of Halifax Co., Va. The will of John Parrott, father of Judith, dated Feb. 18, 1777, Book 1, page 181, lists children of John and Ruth Parrott. A deed in Halifax Co., Va. shows that John Parrott owned 240 acres on Lawson Creek in that county. Records of Oct. Court, 1795, show John Graves sold 47-3/4 acres to Reaves adjoining land of "Esham" Graves. The clerk misspelled many other words in the deed, in addition to Esom's name.

Esom and Judith moved to Tenn. about 1800. Court records of Dec. 15, 1800 for Smith Co., Tenn. show his election as grand juror. Deeds of 1800 and 1808, Smith Co., Tenn., show him owning land on the north side of Cumberland on the water of Wartrace Creek.

A Smith Co., Tenn. deed shows Reuben Graves owning land adjoining that of Esom Graves. A petition for Overton Co., Tenn., established 1806, lists Esom Graves, Beman Graves, Reuben Graves, Charles Graves, and John Graves. Esom Graves was listed in the 1820 and 1830 censuses for Smith Co., Tenn. (R-41, R-43)

Children - Graves

- +837. Beman Graves, b. 13 Jan. 1788, m. Susannah Pate, 25 Aug. 1814, d. 12 July 1865.
- 838. Jeremiah Graves, b. 1790.
- +839. John Parrott Graves, b. 1792, m. Sarah Huse Barton, c. 1827, d.c. 1858.
- 840. Parasidia (or Parasida) Graves, b. 1794, m. Booker Pate.
- 841. Henry Michelberry Graves, b. 1796.
- +842. Elizabeth Graves, m. John Burke, d. 1834.
- 843. daughter, m. Joel Holliday.
- +844. James Logan Graves, b. 8 Feb. 1803, m. Sarah Howard Holloman, 1828, d. 14 March 1874.

GENERATION 7

Rice Graves (830) was born about 1790-92 in VA. He married Candice -----. She was born in NC. It is not known when Rice married Candice, but he is listed as head of household in the 1820 Jackson Co., TN census. He is in the Wilson Co., TN censuses for 1830, 1840, 1850 and 1860.

Rice and his family moved to Hot Spring Co., Territory of Arkansas, about 1833-35. (This doesn't seem likely if he was still in the TN census in 1860.)

The will of Rice Graves was written 26 Feb. 1873, and recorded 24 April 1876 in the Wilson Co., TN court. As Candice was not

mentioned, it is assumed she died before then. He did not mention son Thomas, who was in the 1850 Wilson Co., TN census as age 18. He was the right age to be in the Civil War, and it is assumed he had died, perhaps in the war, before the will was written. The reason his daughter Lucy was mentioned is because she left 2 children who were to receive her share of the estate. The sale of his inventory was recorded 22 Aug. 1876. The children listed below, probably in birth order, are from Rice's will. (R-213)

Children - Graves

- +2244. William Harrison Graves, b. 18 Jan. 1819, m. Amelia Cunningham, 24 May 1845, d. 17 July 1874.
- 2245. Edna A. Graves, b.c. 1825; no marriage record found; in father's household at age 36.
- 2246. Lucy E. Graves, m. Thomas Dean, 25 Aug. 1854, d. before April 1876.
- +2247. Matilda Graves, b.c. 1827, m(1) James H. Chandler, 28 April 1853, m(2) William H. Chandler, 29 Dec. 1855.
- 2248. Thomas Graves, b.c. 1832, d. before 26 Feb. 1873.
- 2249. Reubin Alexander Graves, b.c. 1838, never married. Was executor of his father's will.
- +2250. Martha E. Graves, b.c. 1840, m. Robert Page, 5 Sept. 1865.
- +2251. Sarah Elizabeth Graves, b.c. 1846, m. William B. Taylor, 14 Sept. 1871.

Beman (or Beaman) Graves (837) was born 13 Jan. 1788 in Halifax Co., Va., and died 12 July 1865 at Little Salt Lick Creek, Smith Co., Tenn. He married Susannah Pate, daughter of Stephen Pate and Susannah Martin, on 25 Aug. 1814. She was born May 1792, and died 26 Sept. 1891 at Little Salt Lick Creek.

The will of Beman Graves was filed Sept. 4, 1865 in Smith Co., Tenn. Other records include a deed in 1871, Smith Co., Tenn.; land survey, 1825-1898, Smith Co., Tenn.; inventory of estate, 1871, Smith Co., Tenn. The 1870 U.S. census of Smith Co., Tenn.

listed "Snooky" Graves, age 80; Susannah Graves in later years was called "Snooky".

The 1850 census for Smith Co., TN, listed in dwelling 607 Beaman Graves, 61, farmer, born VA, Susannah Graves, 57, born VA, and children Wade H., 18, Henry M., 15, and Ireph (?) Ann, 5, all born in TN. Next door in dwelling 608 was son Jeremiah Graves, 27, born TN, and his family. Nearby, in dwelling 595, was probable daughter Mariah Frances Wheeler, 28, wife of Rowland Wheeler, 34, and their two children, Elvira S. Wheeler, 5, and Charlotte S. Wheeler, 2 months.

The 1830 census for Smith Co., TN, page 90, dwelling 1608, listed Beaman Graves: 2 males under 5, 2 males 5-10, 1 male 40-50 (Beaman), 1 female under 5, 1 female 5-10, 1 female 10-15, and 1 female 20-30 (wife with wrong age). The 1840 census for Smith Co., TN, page 236, listed Bemon Graves: 2 males 5-10, 1 male 15-20, 1 male 50-60, 1 female 10-15, 1 female 15-20, and 1 female 40-50. It appears that there is one more daughter in the following list than shown by the census results, possibly indicating that Mariah was not a daughter. Another possibility is that Armennilla died young and was not listed in the censuses.

The 1830 census records also indicate that there was a son born 1825-1830 who was not previously included in the list of children. That son was not in the household of Beaman Graves in 1840, but there was a William L. Graves of the correct age in Smith Co., TN in 1840. He was listed on page 252 of the census with 1 male under 5, 1 male 15-20 (him), 1 female under 5, and 1 female 15-20 (his wife). He could not be found in the 1850 census, and it is suggested that he may have died. The 5 year old female in the household of Beaman Graves in 1850 may be William's daughter. (R-43)

Children - Graves

- +2252. Cassandra Pate Graves, b.c. 1821, m. James R. Ray.
- +2253. Mariah Frances Graves, b.c. 1822, m. Rowland Wheeler.

- +2254. Jeremiah Graves, b.c. 1823, m. Nancy J. -----.
- +2255. Octavos Graves, b. 3 April 1823, m. Elvira Thaxton, 6 June 1855, d. 4 July 1861.
- 2256. Armennilla Graves
- 2257. William L. Graves, b.c. 1825, m. -----, possibly d. by 1850. 1 son, b. 1835-40, 1 dau., b. 1835-40, and possibly 1 dau., b.c. 1845.
- 2258. John Gassaway Graves, d.c. age 18 (Smith Co., Tenn.).
- 2259. Sarah ("Sally") Graves, b. 15 June 1828 (or 1824), m. Lafayette Draper, d. 1903.
- +2260. Wade Hampton Graves, b. 10 Nov. 1832, m. Elvira Teal (or Teele), d. 28 Aug. 1901.
- 2261. Henry Michelberry Graves, b.c. 1835, m. Virginia Pate, d. 1865. She was dau. of Jubal Early Pate and Martha ("Patsy") Holliday.
- +2263. Richard McConnell Graves, b. 4 Dec. 1829, m. Elizabeth H. Walker, 30 Oct. 1850, d. 14 Jan. 1908.
- +2264. Thadeus C. Graves, b.c. 1832, m. Nancy Elizabeth Chilcutt, c. 1849, d. after 1889.
- +2265. Adliza Graves, b. 1833, m. Samuel Snodgrass, 1853.
- +2266. Ruth Barton Graves, b. 19 Aug. 1835, m. George Fletcher Jackson, 17 Aug. 1854, d. 25 July 1901.
- 2267. Sarah Graves, b.c. 1838.
- 2268. Clementine Graves, b.c. 1840.

Elizabeth Graves (842) was born in Va., and died in 1834 in Jackson Co., Tenn. She married John Burke, son of William Burke. He was born about 1784 in Albemarle Co., Va., and died 6 June 1842 in Gainesboro, Jackson Co., Tenn. He secondly married Jane Bucham on 23 Sept. 1835.

It has also been stated that Lucy Graves married William C. Burke (or Burks), and that they were the parents of Esom Logan Burke. However, the relationship of Elizabeth Graves and John Burke as the parents was researched by Kathy Austin of Aurora, Colo. Her information is from claim of widow for service pension, War of 1812; Smith Co., Tenn., newspaper of 19 Aug. 1842, where Jane asked for server of heirs; census records; and Caroline Burke who was a daughter of Franklin Parrott Burke and knew some of the people personally.

The children listed below may not be in the proper age order. They were probably all born in Jackson Co., Tenn. (R-136)

Children - Burke

John Parrott Graves (839) was born 1792, probably in Halifax Co., VA, and died about 1858 in White Co., TN, just north of Sparta. He married Sarah Huse Barton about 1827. She was born about 1806 in MA, and died in 1859 in Hilham, Overton Co., TN (close to the Cumberland River, about 15 miles south of the KY border). Her parents were Rev. Titus Theodore Barton (b. 17 Feb. 1766 in Granby, MA, d. 1827 in IL) and Ruth Huse (b. 1769 in Granby, MA, d. 1853 in Jacksonville, IL).

The family was listed in the 1850 census for White Co., TN, 12 district, page 79, dwelling 1056: John P. Graves, 51, Sarah H., 44, Richard, 20, Thadeus Co., 19, Ann Eliza, 17, Bertha, 15, Sarah, 12, Clementine, 10. All the children were born in TN. It is not known why two children were named Clementine. Living next door in dwelling 1057 was William P. Lee, Clementine, and their 3 oldest children. (R-41, R-43)

Children - Graves

- +2262. Clementine Graves, b.c. 1827, m. William Parrott Lee.

- 2269. Henry F. Burke
- 2270. James F. Burke
- 2271. Mary ("Polly") Burke, b. 12 Jan. 1813 (Flynn's Lick, Jackson Co., Tenn.), m. William Green Darwin, 21 Feb. 1833.
- 2272. Elizabeth Burke, m. Tom Simpson.
- 2273. Elvira Leonidas Burke
- 2274. John Graves Burke, b. 13 Nov. 1818, m. Lucy Moore.

- 2275. William Carrol Burke, b.c. 1819, m. Hannah -----.
- 2276. America Ornealo Burke
- 2277. Milly Jane Burke
- +2278. Esom Logan Burke, b. 3 May 1822, m. Harriett Munday, 23 March 1859, d. 18 April 1877.
- 2279. Parizida Burke, b.c. 1824, m. William Washington Moore.
- +2280. Francis Marion Burke, b. 26 Sept. 1825, m(1) Sarah H. Shephard, 3 Jan. 1850, m(2) Ella Moran, 5 March 1879, d. 1 Dec. 1912.
- 2281. Franklin Parrott Burke, b. 21 Sept. 1828, m. Catherine Keener, 2 Oct. 1851, d. 17 Feb. 1923.
- 2282. Nancy Burke, b. 1830.

James Logan Graves (844) was born 8 Feb. 1803 (or 1804) in VA, and died 14 March 1874 in Weston, Platte Co., MO. He married Sarah Howard Holloman (or Holliman) in 1828 in Highland, Jackson Co., TN. She was born in 1804 in Wilson Co., TN, and died 29 Aug. 1884 in Weston, Platte Co., MO. She was supposedly of Dutch ancestry.

James and Sarah were in the 1870 census for Platte Co., MO, page 495, dwelling 1393. He was listed as age 64, farmer, and she was listed as age 62, both born in TN. In the 1880 census for Marshall, Platte Co., TN, Sarah was in the household of her son Christopher, and her age was given as 76. (R-286)

Children - Graves

- +2283. Leonidas M. Graves, b.c. 1830, m(1) Martha B. Powell, m(2) Maggie M. -----, d. 30 Dec. 1894.
- +2284. Ira Ellis Graves, b. 10 Oct. 1831, m. Cynthia Ann Lovelady, 18 Feb. 1860, d. 30 April 1915.
- +2285. William Gwinn Graves, b. 27 Sept. 1833, m(1) Phoebe Kincaid, 12 Aug. 1855, m(2) Ella M. -----, d. 22 March 1914.
- +2286. Serena C. Graves, b. 17 June 1838, m. Joel M. Owens.
- +2287. Christopher Columbus Graves, b.c. 1841, m. Nancy Siler.

- 2288. LaFayette Graves, m. Elosa Clark.
- 2289. Newton G. Graves, b.c. 1845, m. Louise Wells. Newton was in the 1870 census for Platte Co., MO, dwelling 1493, listed as age 25, farmer, no family living with him.
- 2290. Sarah H. Graves

GENERATION 8

William Harrison Graves (2244), called Harrison, was born 18 Jan. 1819 in Jackson Co., TN, and died 17 July 1874 in the Prattsville-Sheridan area of Grant Co., AR. He married Amelia (or Permelia, called "Millie" of "Milly") Cunningham, daughter of Samuel and Margaret Cunningham, on 24 May 1845 in Saline Co., AR. She was born 9 Nov. 1829 in Jackson Co., TN, and died 24 June 1900. They and all their children were buried in the Graves Cem., Grant Co., AR. Census records and the Graves Cem. inscriptions show that they had 5 known children. All their children were born in AR.

The Graves family was listed in Sulphur Springs Twp., Montgomery Co., AR in the 1850 census, and in South Fork Twp., Montgomery Co., AR in the 1860 census. Land records show Wm. H. Graves entered land May 1, 1856 in the NW SE part of Section 15 T2S R24W 40 acres. Samuel Cunningham had entered land 11-1-1848 SE NE S15 T2S R24W 40 ac. & also 10-10-1856 SW SW S14 T2S R24W. The McKinney Cemetery, where Samuel and his daughter Cynthia Cunningham and her family is buried, is on the homestead, NE ¼ of S15, on the north bank of Lake Ouachita. William H. and Amelia sold 240 acres, all in S15 T2S R15W, to David Mayberry for \$4000 on 26 Dec. 1863.

The Graves family moved to Grant Co. between the 1860 and 1870 census (Grant Co. was formed from Jefferson, Saline and Hot Springs counties in 1869). The 1870 census shows them living in Davis Twp. Amelia was living with her son Thomas and his family in the 1880 census for Merry Greene Twp., Grant Co., AR. Amelia indicated in the 1880 census

that her father was born in VA and her mother in SC. Land entry records show William H. Graves, homestead original, NW NW S36 T4S R14W, 40 ac., recorded 4-14-1906; the Grant Co. deed records show that Thomas Graves claimed this land as sole heir of William H. Graves.

Amelia Graves, 48, of Merry Greene Twp., secondly married Asa Baucurn (?), 74, of Franklin Twp., Grant Co., AR, on 10 Dec. 1882. (Much of the information on this family was gathered by Harold Dean Davis or Benton, AR, as part of a family history book, *The Samuel & Margaret Cunningham Family*, and was sent by R-213.) (R-213, R-214)

Children - Graves

- 4375. Samuel R. Graves, b. 15 Aug. 1847, d. 22 Feb. 1875.
- +4376. Thomas Jefferson Graves, b. 15 Sept. 1849, m. Martha Mellissia McDonald, d. 15 April 1920.
- 4377. Marshall A. Graves, b. 25 June 1851, d. 3 Aug. 1876.
- 4378. Candice (or Candis) S. Graves, b. 1 Sept. 1855, d. 18 March 1877.
- 4379. U. L. Graves, b. 31 Jan. 1861, d. 10 July 1868.

Matilda Graves (2247) was born about 1827. She first married James H. Chandler on 28 April 1853. She married second William H. Chandler on 29 Dec. 1855. He was born about 1802 in TN.

There was a James Chandler in the 1850 census for Robertson Co., TN, 10th district, page 83, dwelling 901, who could be the first husband of Matilda. He was listed as 22, school teacher, born TN, with Lutitia Chandler, 23, born TN. The 1880 census for Dist. 15, Robertson Co., TN, page 5A, lists William Chandler, 78, Matilda Chandler, 53, wife, Sam Briley, 23, son-in-law, and Susie Briley, 17, daughter.

Children - Chandler, by William H. Chandler

- 4380. Susie Chandler, b.c. 1863 (TN), m. Sam Briley. He was b.c. 1857 in TN.

Martha E. Graves (2250) was born about 1840 in TN. She married Robert Page on 5 Sept. 1865. He was born about 1823 in TN. They were listed in the 1880 census for Wilson Co., TN, page 404B. Both their children were born in TN.

Children - Page

- 4381. Fannie Lee Page, b.c. 1866.
- 4382. Robert Page, b.c. 1868.

Sarah Elizabeth Graves (2251), probably called Elizabeth, was born about 1846-48 in TN. She married William B. Taylor on 14 Sept. 1871. They were in the 1880 census for Wilson Co., TN, page 372C, where she was listed as Elizabeth. Both children were born in TN.

Children - Taylor

- 4383. William M. Taylor, b.c. 1877.
- 4384. Thomas B. Taylor, b.c. 1879.

Cassandra ("Puss") Pate Graves (2252) was born about 1821 in TN. Her middle name was given as Pate by R-43 and as Mudd by R-337. She married James R. Ray, son of George Raulston Ray and Elizabeth Dycus. He was born 17 Oct. 1819 in Jackson Co., TN. They were in the 1850 census for Smith Co., TN, house 720, two houses away from her brother Octavius in house 718. James and Cassandra were in the 1880 census for Dist. 3, Jackson Co., TN, page 293C, with son Wade living with them. All their children were born in TN, probably in Smith Co. (R-337)

Children - Ray

- +4385. Jeremiah Ray, b. May 1839, m. Elizabeth Sloan, d. 24 Jan. 1910.
- 4386. Armamilla Ray, b.c. 1843.
- 4387. Leonidas M. Ray, b.c. 1846.
- 4388. Sarah J. Ray, b.c. 1848.
- 4389. Wade Hampton Ray, b.c. 1850.

Mariah Frances Graves (2253) was born about 1822 in TN. She married Rowland Wheeler. He was born about 1816. There is no known proof that Mariah was a daughter of Beman Graves. The 1850 census for Smith

Co., TN, shows Beaman Graves as household 607 and Rowland Wheeler as household 595, so they lived very close to each other. An LDS record also gives Beman as the father of Mariah. Both their children were born in TN. (R-338)

Children - Wheeler

- 4390. Elvira S. Wheeler, b.c. 1845.
- 4391. Charlotte S. Wheeler, m. -----. Had descendants.

Jeremiah ("Jerry") Graves (2254) was born about 1823 in TN. He married Nancy J. -----. She was born about 1825 in LA. They were in the 1850 census for Smith Co., TN, house 608, living next door to his parents in house 607. Their first child was born in LA and the others in TN. He was a farmer.

Children - Graves

- 4392. William Graves, b.c. 1840.
- 4393. Henry Graves, b.c. 1842.
- 4394. Laura Graves, b.c. 1846.
- 4395. Harvey Graves, b.c. 1849.

Octavos ("Tobe") Graves (2255) was born 3 April 1823 and died 4 July 1861, both at Little Salt Lick Creek, Smith Co., Tenn. He married Elvira Thaxton (or Thackston?) on 6 June 1855. She was born 8 July 1835 and died 12 June 1920, both in Smith Co., Tenn. Octavos was listed in the 1850 census of Smith Co., TN, page 264, living with the Hogg family (family 718). He was listed as Octavius Graves, age 27, laborer, and nearby neighbors included the Pate and Ray families.

In inventory of 1865-1874, Smith Co., Tenn., D. A. West was appointed guardian of John B. Graves and Susan O. Graves, children of Octavos Graves, deceased. (R-43)

Children - Graves

- +4396. John Beman Graves, b. 12 July 1857, m(1) Clarkie Dillard, m(2) Belle Zeldra Duke, 31 Dec. 1891, d. 30 July 1936.
- 4397. Susan O. Graves

Wade Hampton Graves (2260) was born 10 Nov. 1832 and died 28 Aug. 1901. He married Elvira Elizabeth Teel (or Teal or Teele), daughter of George Teel and Edna Graves (#836). Elvira was born 29 July 1840 and died 22 Jan. 1912. (Edna Graves was a daughter of Reuben Graves, #317, and Elvira and Wade were second cousins.) (R-339)

Children - Graves

- 4398. child, b. and d. 1859.
- 4399. Bernetta Susan Graves, b. 7 Aug. 1859, m(1) James Radford Draper, 7 Dec. 1879, m(2) J. W. Draper, 18 Jan. 1891, m(3) J. A. Montgomery, 1 Nov. 1916, m(4) James R. Richmond, 28 Nov. 1920, d. 14 Nov. 1954. James Radford Draper was b. 8 March 1859 and d. 8 April 1888.
- 4400. Josephine Graves, b. 27 April 1862, d. 9 July 1862.
- 4401. Cortez Henry Graves, b. 21 March 1864, d. 5 Jan. 1874.
- +4402. George Beamon Graves, b. 14 Jan. 1868, m. Ann Tryphena Carver, 26 Nov. 1901, d. 1959.
- 4403. Lee Hatton Graves, b. 3 March 1872, d. 28 Feb. 1875.
- +4404. Verlana Edna Graves, b. 17 Aug. 1875, m. Joseph J. Pate, 25 July 1895.

Clementine Graves (2262) was born about 1828 in TN, probably in White Co. She married William Parrott Lee. He was born about 1819 or 1820 in TN. They reared their family in White Co., TN. The family was in the 1880 census for District 12, White Co., TN, page 495B, and in the 1850 census for District 12, White Co., TN, page 79, dwelling 1057. They were also in the same district in the 1860 census (page 93, dwelling 1371) and the 1870 census (page 397, dwelling 58). All their children were born in TN.

Children - Lee

- 4405. Sarah Angeline Lee, b. 20 Jan. 1845, m. Alamanda Bradford Richardson, 27 Dec. 1865, d. 12 April 1867.
- 4406. Eliza (or Eloise) Lee, b.c. 1847.
- 4407. Emily Lee, b.c. 1849.

- 4408. Thaddeus Lee, b.c. 1851.
- 4409. Rutha Lee, b.c. 1858.
- 4410. James A. Lee, b.c. 1862. Twin of Mary.
- 4411. Mary Lee, b.c. 1862. Twin of James.
- 4412. Thomas L. Lee, b.c. 1870.

Richard McConnell Graves (2263) was born 4 Dec. 1829 and died 14 Jan. 1908. He married Elizabeth ("Lizzie") H. Walker, daughter of James Hill Walker and Elizabeth D. ("Betsy") Snodgrass, on 30 Oct. 1850. She was born 16 Jan. 1830 and died 16 June 1915. They were both buried in Britton Cem., Ellis Co., TX. This family has not been found in any census.

There is a will in Ellis Co., TX for a Margaret Walker Collins with W. L. Graves as administrator. Carl Graves owed her money. W. L. Graves may be Lafayette Graves, and Margaret and Carl are probably his siblings. (R-41, R-283)

Children - Graves

- 4413. Lafayette Graves
- 4414. Samuel Graves

Thadeus C. Graves (2264) was born about 1832 in TN. He married Nancy Elizabeth ("Lizzie") Chilcutt about 1849. She was born about 1837 in TN. They lived in Tarrant Co., TX, and were listed in the census for that county in 1880. Thadeus was proprietor of a dry goods (clothing) store, Thad Graves & Sons, in Mansfield, TX. Their first 2 children were born in TN and the others in TX. (R-41, R-224)

Children - Graves

- 4415. Dr.) Richard W. Graves, b.c. 1857.
- +4416. John Hugh Graves, b. 17 Oct. 1859, m. Emma L. Thornton, 17 Feb. 1891, d. 30 Jan. 1941.
- 4417. Cullen P. Graves, b.c. 1863.
- 4418. William S. Graves, b.c. 1865.
- 4419. Maud Graves, b.c. 1868, m. Z. L. Harland.
- 4420. Commadore Graves, b.c. 1871.
- 4421. Ben B. Graves, b.c. 1874.

Adliza (or Adeliza) Graves (2265) was born about 1833. She married Samuel Snodgrass in 1853 in White Co., TN. He was born about 1830. (R-41, R-224)

Children - Snodgrass

- 4422. James Thomas (or L.) Snodgrass, b.c. 1854.
- 4423. John Graves Snodgrass, b.c. 1856.
- 4424. William Lafayette Snodgrass, b.c. 1858.
- 4425. David Crockett Snodgrass
- +4426. Serma Clementine Snodgrass, b. 1861, m. Drury Cooper Waller, 1878.
- 4427. Richard Columbus Snodgrass

Ruth (or Rutha or Ruthy or Ruthay) Barton Graves (2266) was born 19 Aug. 1835, and died 25 July 1901 in Worthat (could this be Wortham, Navarro Co.?), Texas. She married George Fletcher Jackson on 17 Aug. 1854. (R-41, R-42)

Children - Jackson

- 4428. Marion Jackson
- 4429. John Jackson
- 4430. Clem Jackson

Esom (or Esum or Easom) Logan Burke (2278) was born 3 May 1822 in Jackson Co., Tenn., and died 18 April 1877 in Wilson Co., Tenn. He married Harriett Munday on 23 March 1859 in Wilson Co. She was born in 1832 in Tenn., and died 5 March 1891 in Wilson Co., Tenn. They were both buried in a country graveyard west of Hunter's Point Pike, north of Lebanon, Wilson Co., Tenn. All their children were born in Wilson Co. (R-136)

Children - Burke

- +4431. William Logan Burke, b. 5 Jan. 1860, m. Bettie Morgan Trice, 30 Dec. 1886, d. 9 Nov. 1899.
- 4432. John Pate Burke, b.c. 1862.
- 4433. Parasida Burke, b.c. 1863.
- 4434. James Robert Burke, b. 13 Nov. 1866, d. 6 Feb. 1954.
- 4435. Sarah Eula Burke, b. 9 Dec. 1869, m. ----- Woolard, d. 20 Sept. 1944.

4436. Franklin P. Burke, b.c. 1872.

Francis Marion Burke (2280) was born 26 Sept. 1825 and died 1 Dec. 1912. He first married Sarah H. Shephard on 3 Jan. 1850. He married second Ella Moran on 5 March 1879. (R-343)

Children - Burke, by Sarah H. Shephard

+4437. Mahalia Parrisetta Burke, b. 14 Nov. 1852, m. Orlando Bodeman Coleman, 12 Oct. 1871, d. 1 Feb. 1946.

Leonidas M. Graves (2283) was born about 1830 in TN, and died 30 Dec. 1894. He first married Martha B. Powell. She was born about 1842 in IN. She may have died between 1873 and 1879, since he was shown in the 1880 census with wife Maggie M. -----. She was born about 1852 in MO. Leonidas and family was in the 1870 census for Platte Co., MO, page 495, dwelling 1396, and in the 1880 census for Marshall, Platte Co., MO, page 6C. All his children were born in MO.

Children - Graves, by Martha B. Powell

- 4438. Albert Graves, b.c. 1857.
- 4439. Alice Graves, b.c. 1859.
- 4440. Annie Graves, b.c. 1860.
- 4441. Mollie J. Graves, b.c. 1861.
- 4442. William J. Graves, b.c. 1863.
- 4443. Sallie (or Delila V.) Graves, b.c. 1865. The 1870 census listed her as Sallie and the 1880 census showed Delila V.
- 4444. Christopher Graves, b.c. 1869. May have died young, since he was not in 1880 census.

4445. Mattie L. Graves, b.c. 1872.

Children - Graves, by Maggie M. -----

4446. Hugh E. Graves, b.c. 1879.

Ira Ellis Graves (2284) was born 10 Oct. 1831 in Jackson Co., TN, and died 30 April 1915 in Weston, Platte Co., MO. He married Cynthia Ann Lovelady, daughter of Andrew Jackson Lovelady and Juda Newby, on 18 Feb. 1860 in Platte Co., MO. She was born 12

April 1841 in MO, and died 18 June 1895 in Platte Co., MO.

Ira and family were in the 1870 census for Platte Co., MO, page 495, dwelling 1395, and in the 1880 census for Marshall, Platte Co., MO, page 9B. In 1870 he was living next to his father James and brothers William, Christopher, and Leonidas. All children of Ira and Cynthia were born in MO. (R-341)

Children - Graves

- 4447. Lula (or Azabat) Graves, b.c. 1862.
- 4448. James S. Graves, b.c. 1864.
- 4449. Juda or Judah) Graves, b.c. 1865.
- 4450. Sarah ("Sada") Howard Graves, b.c. 1867.
- 4451. Jackson ("Jack") Graves, b.c. 1869.
- +4452. Estella (or Estelle) Belle Graves, b. 17 Oct. 1870, m. Edward Davis Smith, 6 July 1892, d. 6 July 1963.
- 4453. Joel Graves, b.c. 1873.
- 4454. Maud Graves, b.c. 1875.
- 4455. John Graves, b.c. 1878.

William Gwinn Graves (2285) was born 27 Sept. 1833 in TN, and died 22 March 1914 in Portland, CA. He married Phoebe Kincaid on 12 Aug. 1855 in Weston, Platte Co., MO. She was born 6 Aug. 1835 in Dekalb, Buchanan Co., MO (according to R-340) or in KY (according to the 1870 census), and died 26 Oct. 1909 in Weston, Platte Co., MO. It appears that Phoebe either died about 1875-1879 or she and William divorced about that time, since the 1880 census shows William with Ella M. -----, age 27, born in Maine, as his wife.

The family was in the 1870 census for Platte Co., MO, page 495, and in the 1880 census for Marshall, Platte Co., MO, page 9A. Also living with them in 1880 was William's nephew James Owens, son of his sister Serena. All William's children were born in MO. (R-340)

Children - Graves, by Phoebe Kincaid

- 4456. Sarah ("Sally") Graves, b.c. 1858.
- 4457. Bell Graves, b.c. 1860.

- +4458. Nancy W. Graves, b. 2 Sept. 1861, m. Allen A. Hillix, 16 Dec. 1882, d. 12 March 1884.
- 4459. Robert E. (or Proffit) Graves, b.c. 1865-1866.
- 4460. Hattie Graves, b.c. 1870.
- 4461. June Graves, b.c. 1872.
- 4462. George Graves, b.c. 1874.
- Children - Graves, by Ella M. -----
- 4463. Willie Graves, b. 1880.

Serena C. Graves (2286) was born 17 June 1838 in TN. She married Joel M. Owens. He was born 22 July 1832 in Lewis Co., KY. Both their children were born in Platte Co., MO. It seems likely that either Serena or Joel died by 1880, since their children were living with relatives in 1880. James was living with his uncle William Graves, and Lizzie was living with her uncle Christopher Graves. (R-342)

Children - Owens

- 4464. Lizzie Owens, b.c. 1863.
- 4465. James Owens, b.c. 1867.

Christopher Columbus Graves (2287) was born about 1841 in TN. He married Nancy Siler. She was born about 1851 in TN. They were in the 1870 census for Platte Co., MO, page 495, dwelling 1394, with no children. They were in the 1880 census for Marshall, Platte Co., MO, page 9A. Also living with them in 1880 was his mother and his niece Lizzie Owens. All their children were born in MO.

Children - Graves

- 4466. Lula Graves, b.c. 1875.
- 4467. Adelia Graves, b.c. 1877.
- 4468. Lena L. Graves, b.c. 1878.

DESCENDANTS OF PARENTS OF ALVA
GRAVES OF TN & MO

The following information was originally submitted by Mrs. Alberta Jacobsen, formerly of Greeley, CO, but her whereabouts is no

longer known. If you can help with this part of the family, please let me know.

GENERATION 1

----- Graves (1) married. They lived in TN. According to *Platte County History*, he had a nephew named James L. Graves. The only person in Platte Co., MO who fits is James Logan Graves, son of Esom Graves and grandson of John Graves (in the preceding genealogy), descended from Capt. Thomas Graves of VA (genealogy 169). The brother of Esom Graves who is most likely to be the father of Alva Graves is William Graves, but Winfield Graves is also a possibility. (R-1)

Children - Graves

- +2. Alva Graves, b.c. 1815, m(1) -----, before 1836, m(2) Jane McMahan, 17 March 1846, m(3) Elizabeth Cowen, 13 July 1849, d. March 1860.
- +3. Elizabeth Graves, m. Andrew Lawson.

GENERATION 2

Alva Graves (2) was born about 1815 (based on his age of 45 at death) or about 1817 (based on the 1850 census) in TN, and died in March 1860 in Platte Co., MO. (subdivision 55), according to the 1 June 1860 mortality schedule for Platte Co. He first married sometime before 1836 in TN, wife's name unknown. He secondly married Jane McMahan on 17 March 1846 in DeKalb Co., MO. His third marriage was to Elizabeth Cowen on 13 July 1849 in DeKalb Co., MO. She was born about 1809 in TN. Elizabeth survived him.

In 1839 he was on the tax list of Platte Co., MO as Alvey Graves. 1843 shows a land grant for Platte Co., MO for an Alven Graves, Sept. 20, 1843 in section 28. 1850 Missouri census shows him in DeKalb Co., MO. Estate filed in Platte Co., MO, April 1860, lists Mississippi Lipscomb, Parozetta Lipscomb, and Adeline Graves as children, and Elizabeth Graves as widow of deceased.

The cemetery Alva Graves is buried in has not been determined, but a Graves Cemetery is

listed in Paxton's *Platte County History*, located 5 miles north of Weston, MO on Earl Benner, Jr. farm, with a notation that the farm was homesteaded in 1843 by Alva Graves.

According to *Platte County History*, p. 294: April 5 1860: "Alva Graves having died, N. I. Alexander administrated. Bond \$2,000. He was a cousin of James L. Graves ..."

The 1850 census for District 28, DeKalb Co., MO, page 424, dwelling 159, lists Alvah Graves, 33, Elizabeth Graves, 41, Mississippi, 13, Parazada, 9, Adaline, 6, Samuel W. Lawson, 21, Andrew J. Lawson, 19, Mary A. Lawson, 16, Newton A. Lawson, 8, and Martha Lawson, 6. Alva, Elizabeth and Mississippi were born in TN, Newton and Martha were born in AR, and the others were all born in MO. (R-1)

Children - Graves, by 1st wife

- +4. Mississippi Graves, b.c. 1836, m. Thomas Lipscomb, 5 Aug. 1853, d. 22 July 1878.
- +5. Parozetta Graves, b. 13 March 1840, m. Joseph Lipscomb, d. 3 March 1901.
- 6. Adeline (or Adelaide) Graves, b.c. 1844.

Elizabeth Graves (3) was born about 1825 in TN. She first married Andrew Lawson. He was born about 1826 in TN. After he died, she secondly married Wash. Dyer, and was still living in Marshall Twp., Platte Co., MO in 1860. Andrew, Elizabeth, and their children are in the 1850 census for District 28, DeKalb Co., MO, page 423, dwelling 153, living with F. P. Berk, 21, and Sara Amanda Berk, 19. Both children were born in MO. (R-1)

Children - Lawson

- +7. Napoleon Lawson, b.c. 1844, m. Louisa -----.
- 8. Betsy A. Lawson, b.c. 1848.

GENERATION 3

Mississippi Graves (4) was born about 1836 in TN, and died 22 July 1878. She married Thomas Lipscomb. Thomas and children were in the 1880 census for Weston, Platte Co., MO, page 25D. All the children were born in MO. (R-1)

Children - Lipscomb

- 9. Andrew Lipscomb, b.c. 1857.
- 10. Ada Lipscomb, b. 1862.
- 11. Lizzie Lipscomb, b.c. 1864.
- 12. Benjamin Lipscomb, b.c. 1869.
- 13. Michael Lipscomb, b.c. 1871.
- 14. Alva Lipscomb, b.c. 1878.

Parozetta (or Parazetta or Parazada) Graves (5) was born 13 March 1840 in MO, and died 3 March 1901 in Bates Co., MO. She married Joseph Lipscomb, brother of Thomas Lipscomb. He may have died young (perhaps in the Civil War), since he was not in the 1880 census and his youngest child was born about 1862. Both children were born in MO. (R-1)

Children - Lipscomb

- 15. William Lipscomb, b.c. 1860.
- 16. Adaline Lipscomb, b.c. 1862.

Napoleon ("Nep") Lawson (7) was born about 1844 or 1845 in TN. He married Louisa -----. She was born about 1854 in KY. They were in the 1880 census for Marshall, Platte Co., MO, page 14B, and his mother was living with them at that time. All their children were born in MO. (R-1)

Children - Lawson

- 17. Laura Lawson, b.c. 1870.
- 18. Charley Lawson, b.c. 1874.
- 19. Andrew Lawson, b.c. 1877.

QUESTIONS AND INFORMATION

MISCELLANEOUS GRAVES FAMILIES

Mrs. Kay Levy (kaylevy@juno.com), and her step-mother, Mrs. Vicki L. Graves, formerly of Scotts Valley, CA, contributed the information in the following genealogy. They would like to know the ancestry of HARRY ALBERT GRAVES.

(ED. NOTE: I suspect that this Graves family was not originally from Holland, as suggested in the genealogy, but may have been from England before that. However, I don't

have any firm evidence for that belief. Help is needed.)

DESCENDANTS OF HARRY ALBERT
GRAVES AND MARY ANNA MAXWELL
OF NS, CANADA & MA

GENERATION 1

Harry Albert Graves (1) was born 1850-1851 in Nova Scotia, Canada. He married Mary Anna Maxwell. She was born 25 July 1851 in Nova Scotia. Her father was John Maxwell who emigrated to Nova Scotia from Loch Broom, Scotland to New Glasgow, NS in 1834. He lived in Londonderry, NS. Both Harry and Mary moved to the U.S. before marriage, and probably married in Massachusetts. They lived in Haverhill, MA.

The 1920 census for Haverhill, Essex Co., MA, shows Harry A. Graves, age 69, living on Oxford Ave. as head of family, owning the house, with wife Mary A. Graves, 68, both born in Nova Scotia. Both immigrated in 1860 and both were naturalized in 1880. Both can read and write. He speaks Dutch and English, and she speaks Scotch and English. His parents are both from Holland, and her parents are both from Scotland. He is a wage earning carpenter who builds houses.

Children - Graves

2. Mabel Graves, b. 19 May 1884, m. ----- Louis, d. 18 April 1987.
- +3. Albert William Graves, b. 13 Aug. 1890, m. Bertha Therese Stover, 20 Jan. 1918.
- +4. Helen Graves, b. 9 March 1892, m. ----- McCarthy.

GENERATION 2

Albert William Graves (3) was born 13 Aug. 1890 in Haverhill, MA. He married Bertha Therese Stover, daughter of Fred Stover and Anna Moss, on 20 Jan. 1918 in Haverhill, MA. She was born 19 Nov. 1891 in Haverhill, MA, and died 9 Sept. 1987 in Escondido, CA. Bertha told everyone that her birthdate was 19 Nov. because she didn't want her birthday to be so close to Christmas. She

graduated from high school in Haverhill and attended the University of California in Berkeley, CA. She also completed business school in Lynn, MA. Her first job was at a Woolworth department store where she saved 10 cents per week to buy a painting of a bowl of roses.

Bertha purchased the Wellswood (Hotel) Tavern in Hampton Falls (or North Hampton), New Hampshire in 1921 with the help of a man named Wentworth. She owned it during a period when her children were growing up. The hotel was built in 1802 and had pine trees that son Billy climbed. He could see the ocean from this precarious perch when he was a boy. The ocean could also be seen from the top of the local water tank which he was also known to climb. The hotel had 23 rooms and 13 fireplaces. Notable people who were acquainted with the hotel included John D. Rockefeller who stopped at the hotel for lunch, leaving his standard 10 cent tip. John Greenleaf Whittier was a next door neighbor during many summers prior to Mrs. Graves' purchase of the hotel. The hotel was located on the main stagecoach road between Portland, Maine and Boston, Massachusetts, and had its own stable with horses located across the street. Later, trolley cars ran in front of the hotel from Newburyport, MA to Hampton Beach, NH. The Wellswood became a furniture store in later years before it burned down.

Children - Graves

- +5. Marjorie Graves, b. 9 July 1918, m(1) ----- Sinclair, before 1933, m(2) George Eames, after 1934.
- +6. William Stover Graves, b. 1 March 1920, m(1) Alice Bybee, c. April 1946, m(2) Ruth Ann Lloyd, c. 24 June 1966.

Helen Graves (4) was born 9 March 1892. She married ----- McCarthy.

Children - McCarthy

7. Margie McCarthy, m. Bill Treiger.

GENERATION 3

Marjorie ("Marge") Graves (5) was born 9 July 1918, and died of cancer in Groton on Hudson, NY. She first married ----- Sinclair before 1933. She married second George Eames after 1934. He was born 17 Dec. 1901 in Hartford (or Bridgeport), CT, and died of cancer in Jan. 1967 in Winter Park, Orange Co., FL.

Children - Sinclair

- 8. Barbara ("Bunny") Sinclair, b.c. 1932-1933.

Children - Eames

- 9. child
- 10. child
- 11. child

William Stover ("Bill") Graves (6) was born 1 March 1920 in Newburyport, MA, and was baptized at the First Congregational Church, Newburyport, MA. He first married Alice Bybee, daughter of Addison Bybee and Elizabeth Skeele, about April 1946. She was born 1 Feb. 1926 in Milford, Beaver Co., UT. He married second Ruth Ann ("Vicki") Lloyd, adopted daughter of her uncle Ivan Lloyd and her aunt Dottie -----, about 24 June 1966, probably in St. Louis, MO. She was born 5 Aug. 1935 in Phoenix, AZ.

Children - Graves, by Alice Bybee

- 12. child
- 13. child
- 14. child

NORTHERN GRAVES FAMILIES

Mr. Eric Wey, 2638 Hodges Bend Circle, Sugar Land, TX 77479 (karwey@rocketmail.com), wrote that his g-grandmother was Josephine Warren Norton, who was a g-granddaughter of JOHN GRAVES in the following genealogy segment. He would like to learn more about this part of the Graves family and the earlier ancestry.

(ED. NOTE: This is part of the descendants of WILLIAM GRAVES of Dover, NH. The descent is: William¹, William², Joseph³, Joseph⁴, Joseph⁵, John⁶, Joseph Warren⁷, etc.)

GENERATION 6

John Graves (173) was born 29 (or 30) Sept. 1800 in New Market, NH, and died in Nov. 1800 (date is wrong) in Palmer, MA. He married Delilah Smith on 19 Jan. 1822 at Boston, MA. She was born 12 April 1798 in Wolfborough, NH, and died 4 June 1873 in Palmer, MA. All their children were born in Methuen, MA, except for James, Elizabeth, and Mary, who were born in Boston, MA.

Children - Graves

- 358. James William Graves, b. 12 Aug. 1822, d. 17 Jan. 1842 (Danvers, Mass.).
- 359. Ann Elizabeth Graves, b. 1 Nov. 1823, d. 22 Dec. 1844 (Methuen, Mass.).
- 360. Sarah Abbie Graves, b. 6 July 1825.
- 361. Emeline Graves, b. 7 Oct. 1826, d. 2 May 1842 (Methuen, Mass.).
- 362. Mary Hamilton Graves, b. 8 June 1828, m. Samuel S. Mann, 29 May 1849, d. Feb. 1860.
- +363. John Meader Graves, b. 1 Nov. 1830, m. Mary A. Huddeston, 1 July 1849, d. 4 Sept. 1855.
- 364. Octavia McClary Graves, b. 15 May 1832, m. David McFarland, 25 Dec. 1852 (Boston, Mass.).
- 365. Delilah Smith Graves, b. 28 Nov. 1833, m. Edwin L. Davis, 22 June 1851 (Lawrence, Mass.). Lived in Palmer, Mass.
- 366. Henry Plummer, b. 11 April 1836, d. 22 Aug. 1841 (Methuen, Mass.).
- 367. Joseph Graves, b. 4 Aug. 1837, d. 27 Aug. 1838 (Methuen, Mass.).
- +368. Joseph Warren Graves, b. 6 Nov. 1839, m. Harriet M. Chapin (or Harriet E. Shaw), 1860, d. 20 Oct. 1863.
- +369. Sewell Fogg Graves, b. 17 Feb. 1841, m. Amelia A. Batchelder, 6 March 1866.

GENERATION 7

Joseph Warren Graves (368) was born 6 Nov. 1839 in Methuen, MA, and died 20 Oct. 1863 in Alexandria, VA (*History of Palmer*

County Cemetery incorrectly gives 20 Oct. 1870). He was an assistant surgeon during the Civil War. He married Harriet M. Chapin (or Harriet E. Shaw) in 1860 at Methuen, MA.

Children - Graves

485. Mabel Graves, b. Oct. 1861.
+486. Josie Warren Graves, b. 11 Feb. 1864, m(1) ----- Howard, m(2) Mayhew G. Norton, 3 Sept. 1890 (or 1891), d. 31 May 1895.

GENERATION 8

Josie Warren Graves (486) was born 11 Feb. 1864 in Monson, MA (birth cert., town of Monson), and died 31 May 1895 in childbirth in North Tisbury, MA (death cert., town of North Tisbury). She first married ----- Howard. She married second Mayhew G. Norton on 3 Sept. 1890 (or 1891) in Tisbury, MA (marriage cert., town of Tisbury).

Children - Norton

- 555a. Josephine Warren Norton, b. 31 May 1895 (North Tisbury, MA), m. Angus Lohnes, 13 May 1911 (Tisbury, MA), d. 11 April 1963 (Danvers, MA).

SOUTHERN GRAVES FAMILIES

Ms. Nancy Graves Bulmer, 15418 North Chronicle Rd., Mead, WA 99021 (nnbulmer@aol.com), Mrs. Clarence Howell, Route 3, Box 136, Macon, MO 63552, and Mr. Jeffrey Morgan (flyingmorgans@msn.com), are all interested in learning more about the family of THOMAS GRAVES of NC and Pulaski Co., KY, discussed below.

DESCENDANTS OF THOMAS GRAVES
OF NC AND PULASKI CO., KY

GENERATION 1

Thomas Graves (1) was born and reared in N.C. He married, probably Celia ----- . She was born about 1805. Her last name may have been Graves. He moved to Pulaski Co., Ky., and had at least one son, William. He probably died before 1850, since Celia was

living with her son George in the 1850 census for 52nd district, Macon Co., MO.

According to a 1927 newspaper article, there were three sons, William, James, and Washington, with William the oldest. The 1850 census for Macon Co., MO, 52nd district, page 176, lists the families of these 3 sons. Also in that county and district are David Graves (page 253), age 50, and Simpson Graves (page 269), age 37. It is not known whether these people are related

According to a biographical sketch of George W. Graves, born 1829, who was probably the Washington Graves mentioned in the article, he was one of 8 children of Jesse Graves and Celia Graves. This same sketch stated that George W. was a grandson of Robert Graves of Pulaski Co., Ky., and that could have meant that Robert was the father of Thomas/Jesse or of Celia (assuming that Celia's maiden name was really Graves). It is apparent that there is confusion here that needs to be clarified. It will be assumed here that Thomas and Jesse Graves are the same, and that Thomas had 8 children, including the 3 sons listed below.

This part of the family may have been descended from genealogy 56, John Graves of VA, and Orange Co., NC, and the Robert Graves mentioned above may be the one in that genealogy.

Children - Graves

- +2. William Riley Graves, b. 12 Dec. 1822, m(1) Permelia Reynolds, 1845, m(2) Catherine (Reynolds) Hudson.
+3. James Graves, b.c. 1827, m. Americo A. -----.
+4. George Washington Graves, b. 12 Oct. 1829, m. Louisa Moss, 12 Jan. 1850.

GENERATION 2

William Riley Graves (2) was born 12 Dec. 1822 in Pulaski Co., Ky., and died 20 June 1898 (or 1897). He moved to Macon Co., Mo. in 1838 or 1839, and settled first in Woodville, but after remaining a short time moved to a small farm in the vicinity, and finally bought

land farther north and moved there. He was a Democrat, and a member of the Christian Church.

He first married Permelia Reynolds, a native of Macon Co., Mo., daughter of George Reynolds, in 1845. She was born 9 Sept. 1818 and died 26 Nov. 1869 (supposedly at the age of 46, but these dates indicate she was 51). He then married her sister, Mrs. Catherine (Reynolds) Hudson (?). She died in 1893.

The family was listed in the 1850 census for 52nd district, Macon Co., MO, page 176. They were in the 1880 census for Middle Fork, Macon Co., MO, page 312D, which listed William, Catherine, Hiram N., Bell, Frank, Catharine, Green, and Lee, all born in KY.

Children - Graves, by Permelia Reynolds

- +5. George Washington Graves, b. 27 April 1846, m(1) Mary W. Patton, 15 April 1866, m(2) Mary H. Judy, d.c. 1887.
- +6. Ursula Jane Graves, b.c. 1847, m. James J. Richardson.
- +7. Robert Madison Graves, b. 1 April 1849, m. Flora A. Sage, 9 Jan. 1873.
- +8. Mary Daniel Graves, m. R. H. Walker.
 - 9. Hiram Newton Graves, b.c. 1855.
- +10. Sarah Caroline Graves, b. 1856, m. William J. Richardson, d. 1942.
 - 11. Celia Isabelle Graves (called Isabelle or "Bell"), b.c. 1859, m. James Rowe.
 - 12. James Franklin ("Frank") Graves, b.c. 1860.
 - 13. Catherine Graves, b.c. 1862, m. John Tooley, d. 23 May 1919.
- +14. William Green Graves, b. 3 April 1864, m. Eva Haley, 5 March 1895.
- +15. Lysander Lee Graves, b. 9 March 1866, m. Tena Mayers, 27 Feb. 1890.
 - 16. child, died in infancy.
 - 17. child, died in infancy.

James Graves (3) was born about 1827 in KY. He married Americo A. ----- . She was born about 1832 in KY. They were listed in the 1850 census for 52nd district, Macon Co., MO, page 176. Both their children were born in KY.

Children - Graves

- 18. Nancy J. Graves, b.c. 1848.
- 19. William Graves, b. 1850.

George Washington Graves (4), probably called Washington, was born 12 Oct. 1829 in Pulaski Co., KY, and moved to Macon Co., MO in 1838. He married Louisa Moss, a native of Macon Co., and daughter of Carl and Mary Moss, on 12 Jan. 1850. She was born about 1835 in MO. George and Louisa were listed in the 1880 census for Round Grove, Macon Co., MO, page 322D. Their son John, and daughter Mary and her family were also living with them. All their children were born in MO.

Children - Graves

- 20. Francis Marion Graves, b.c. 1854, m. Alice ----- . They were in the 1880 census for Round Grove, Macon Co., MO, page 323A. She was b.c. 1861 in MO, with her father born in TN and her mother in KY. Also living in their household was Lusillia Wauch, age 8, born in MO, both parents born in OH.
- +21. Martha Ann Graves, b.c. 1857, m. John Bohannan.
- 22. John A. ("Johnny") Graves, b.c. 1858 (MO).
- +23. Mary P. Graves, b.c. 1860, m. John Whiler.

GENERATION 3

George Washington Graves (5) was born 27 April 1846 in Middle Fork Township, Macon Co., MO, and died about 1887. He grew to maturity on his father's farm, and was also a farmer and stock raiser. He first married Mary W. Patton of Macon Co. on 15 April 1866. She died in 1879. He secondly married Mary H. Judy of Macon Co. She was born about 1858 in KY. He belonged to the Christian Church and his second wife belonged to the Missionary Baptist Church.

George was listed in the 1880 census for Middle Fork, Macon Co., MO, page 312C, with his second wife, and his children, all born in MO. Children listed were Betty, age 10,

William E., Ida N., and Oliver F. If his first wife died in 1879, then all the children listed in 1880 were probably by her.

Children - Graves, by Mary W. Patton

24. Permelia E. Graves (could be Betty, b.c. 1870), died young.
25. Robert H. Graves, died young.
26. son, died in infancy.

Children - Graves, by Mary H. Judy

27. William A. (or E.) Graves, b.c. 1875.
28. Ida M. (or N.) Graves, b.c. 1877.
29. Oliver F. Graves, b.c. 1879.
30. Pearly G. Graves
31. George L. Graves

Ursula (or Ursley) Jane Graves (6) was born about 1847 in MO. She married James J. Richardson. He was born about 1842 in MO. She was listed in the 1850 census with her parents as Ursula J., and the transcribed listing in the 1880 census for Middle Fork, Macon Co., MO, page 312D, shows her as Uasta C. All their children were born in MO.

Children - Richardson

32. Lee E. Richardson, b.c. 1867.
33. Richard Richardson, b.c. 1870.
34. Walter F. Richardson, b.c. 1872.

Robert Madison Graves (7) was born 1 April 1849 in Middle Fork Twp., Macon Co., Mo., and died after 1927. He obtained his education in the district schools in the neighborhood of his father's farm, which he attended irregularly during the winter months for a few years, all the while assisting in the labors of the farm. The Civil War broke out in the midst of his school days. He stayed at home, taking care of the property and helping with the farm work.

He married Flora A. Sage, daughter of James Sage and Sarah Jett, on 9 Jan. 1873. James and Sarah were natives of Ky. and pioneers of Mo., living in Macon Co.

Robert, Flora, and the children were all members of the Christian Church. Robert was a Democrat. The family was in the 1880 census for Middle Fork, Macon Co., MO, page

312C, listed as Robert N. Graves, age 35, farmer, Nora A. Graves, 27, and Philip M. Graves, 2.

Children - Graves

35. Philip M. Graves, b.c. 1878 (MO).
36. Grace Graves
37. Emory Graves
38. child
39. child
40. child

Mary Daniel Graves (8) married R. H. Walker.

Children - Walker

- +41. Martha Ellen Walker, m. -----
Breuington (?).

Sarah Caroline Graves (10) was born about 1856 in MO, and died in 1942. She married William J. Richardson. He was born about 1852 in MO, and died in 1936. They were in the 1880 census for Round Grove, Macon Co., MO, page 321B. Living with them was Jane Richardson, age 64, widowed, probably mother of William.

Children - Richardson

42. Leone Richardson (daughter), b.c. 1874.
- +43. Permillia Richardson, b. 6 April 1877, m. Ira William Barton, 16 Aug. 1898, d. 24 Feb. 1969.
44. Mary Richardson, b.c. 1879.

William Green Graves (14), called Green, was born 3 April 1864 in Middle Fork (or Middlefork) Twp., Macon Co., Mo. He married Eva Haley, daughter of James Haley and Sarah Wedding of Randolph Co., Mo., on 5 March 1895.

Children - Graves

45. Hettie Graves
46. Opal Graves
47. William Green Graves, Jr.
48. J. T. Graves

Lysander Lee Graves (15), called Lee, was born 9 March 1866 in Middle Fork Twp., Macon Co., Mo. He married Tena Mayers on

27 Feb. 1890 in Macon Co., Mo. She was a native of Macon Co., and a daughter of A. T. H. Mayers and Minerva Rowland.

Children - Graves

49. William A. Graves
50. Gertrude Beulah Graves (or is this 2 daughters?)
51. Homer Lee Graves
52. daughter
53. child, died young.
54. child, died young.

Martha Ann Graves (21) was born about 1857 in MO. She married John Bohannan. He was born about 1846 in MO. They and their 3 children, all born in MO, were in the 1880 census for Middle Fork, Macon Co., MO, page 313B.

Children - Bohannan

55. James F. Bohannan, b.c. 1875.
56. Della W. Bohannan, b.c. 1878.
57. Jesse L. Bohannan, b.c. 1879.

Mary P. Graves (23) was born about 1860 in MO. She married John Whiler. He was born about 1855 in MO. They were in the 1880 census for Round Rock, Macon Co., MO, page 322D, living with her parents, George and Louisa Graves. Both their children were born in MO.

Children - Whiler

58. Joseph Whiler, b.c. 1878.
59. Libbie Whiler, b.c. 1879.