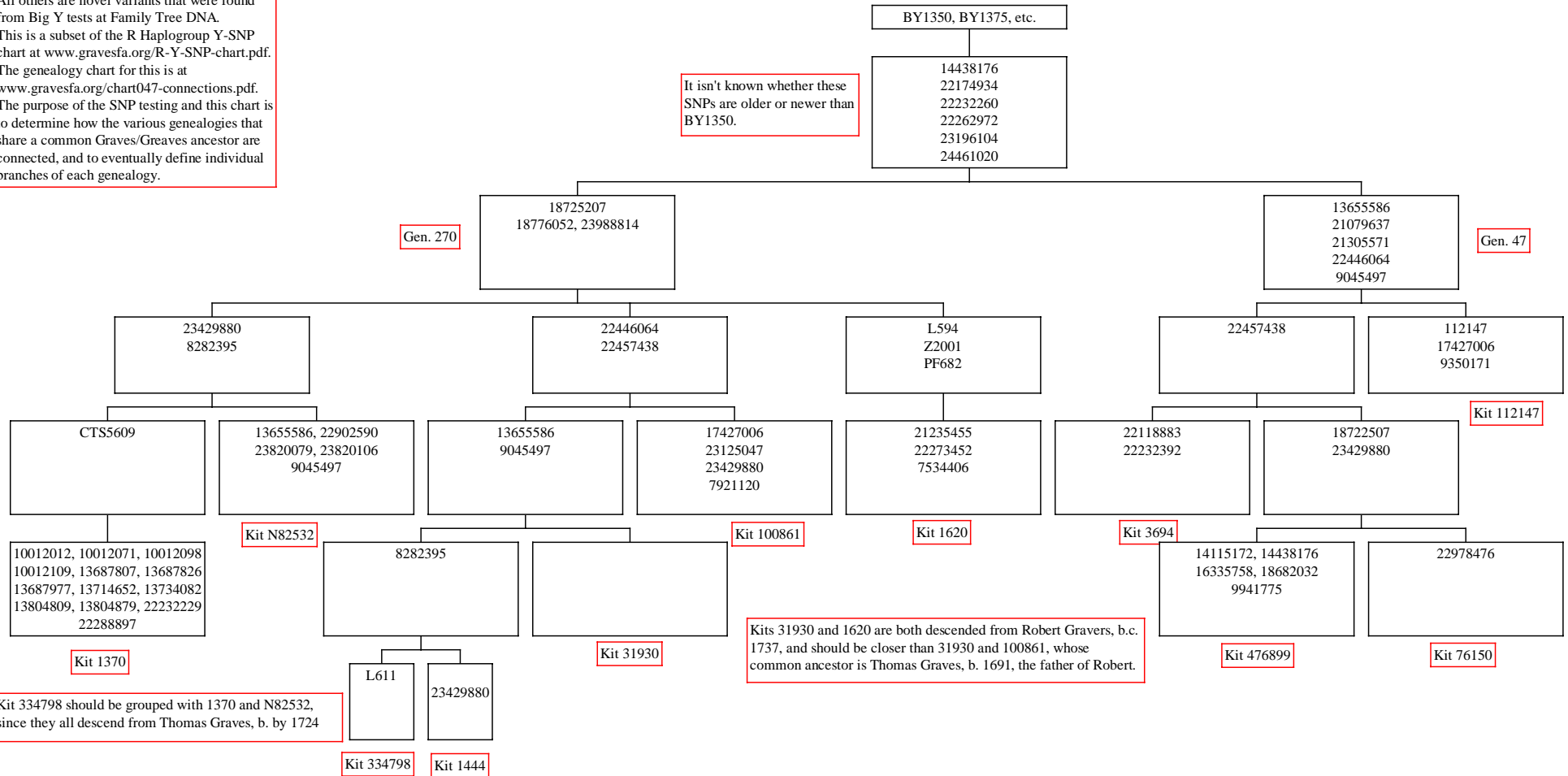


**Y-DNA GROUP R1-047**  
**SNP TREE FROM BIG Y TEST RESULTS**  
 (Rev. 25 April 2017)

BY1350, L594 and Z2001 are known SNPs. All others are novel variants that were found from Big Y tests at Family Tree DNA. This is a subset of the R Haplogroup Y-SNP chart at [www.gravesfa.org/R-Y-SNP-chart.pdf](http://www.gravesfa.org/R-Y-SNP-chart.pdf). The genealogy chart for this is at [www.gravesfa.org/chart047-connections.pdf](http://www.gravesfa.org/chart047-connections.pdf). The purpose of the SNP testing and this chart is to determine how the various genealogies that share a common Graves/Greaves ancestor are connected, and to eventually define individual branches of each genealogy.

It isn't known whether these SNPs are older or newer than BY1350.



Kit 334798 should be grouped with 1370 and N82532, since they all descend from Thomas Graves, b. by 1724

Kits 31930 and 1620 are both descended from Robert Gravers, b.c. 1737, and should be closer than 31930 and 100861, whose common ancestor is Thomas Graves, b. 1691, the father of Robert.