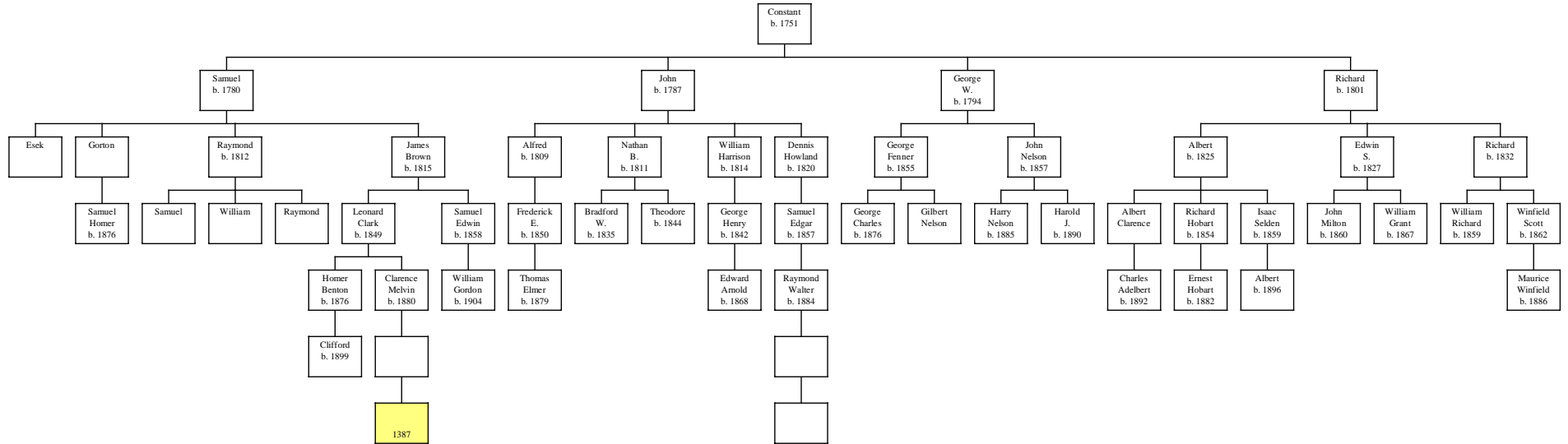


Descendants of Constant Graves and Comfort Bates of Rehobeth, MA & Scituate, RI (Gen. 130)

(Rev. 9 Sept. 2005)



NOTES: This chart shows male lines of descent only, since the focus is on using Y-DNA analysis to trace the Graves surname.
 The number in each bottom colored box is the DNA test ID.
 When two descendants of a common ancestor have exactly the same DNA test results, it is assumed that the common ancestor also had that result, and all boxes up to and including the common ancestor have been given the same color.
 All boxes with the same color have the same DNA test results.
 24 of 25 markers that 24 of the 25 markers matched the inferred ancestral haplotype. The ancestral haplotype for this chart is that for all the related families included in the large blue block of the master DNA summary table.
 A notation like 13-19 indicates a mutation from the ancestral haplotype, and means marker 13 had a value of 19.