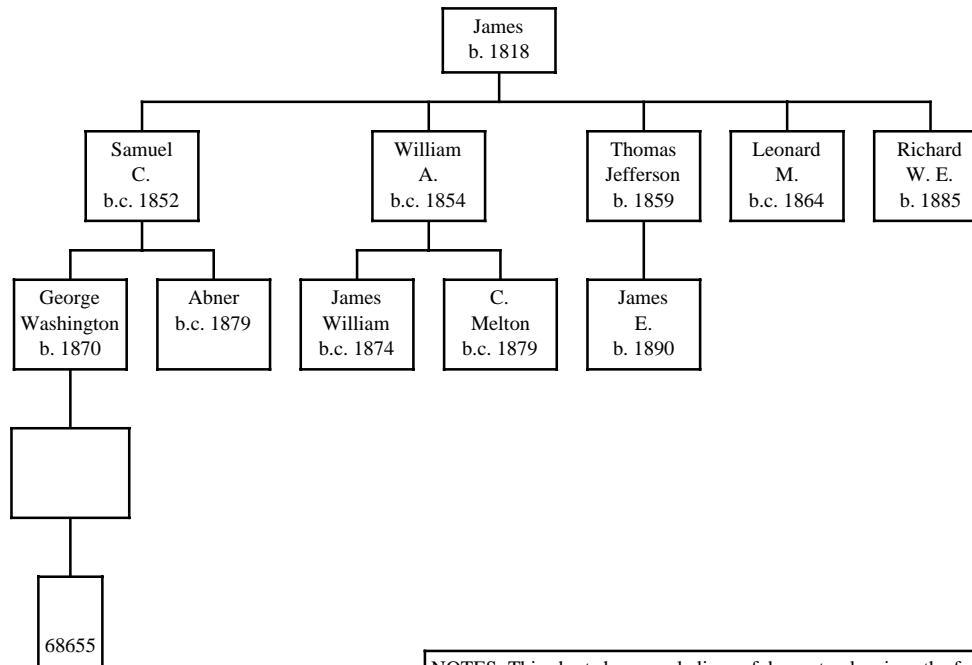


Descendants of James Graves of NC and Marion Co. & Baxter Co., AR (Gen. 820)  
 (Rev. 19 July 2006)



NOTES: This chart shows male lines of descent only, since the focus is on using Y-DNA analysis to trace the Graves surname.  
 Although no one in this family has yet participated in the DNA study, when they do, the following comments will apply.  
 The number in each bottom colored box is the DNA test ID.  
 When two descendants of a common ancestor have exactly the same DNA test results, it is assumed that the common ancestor also had that result, and all boxes up to and including the common ancestor have been given the same color.  
 All boxes with the same color have the same DNA test results.  
 24 of 25 means that 24 of the 25 markers matched the inferred ancestral haplotype.  
 A notation like 13-19 indicates a mutation from the ancestral haplotype, and means marker 13 had a value of 19.  
 It is believed that this Graves family may be related to others from Cambridgeshire, including genealogies 116, 231, and 683. Descendants of this family need to participate in the DNA study to see whether that is correct.