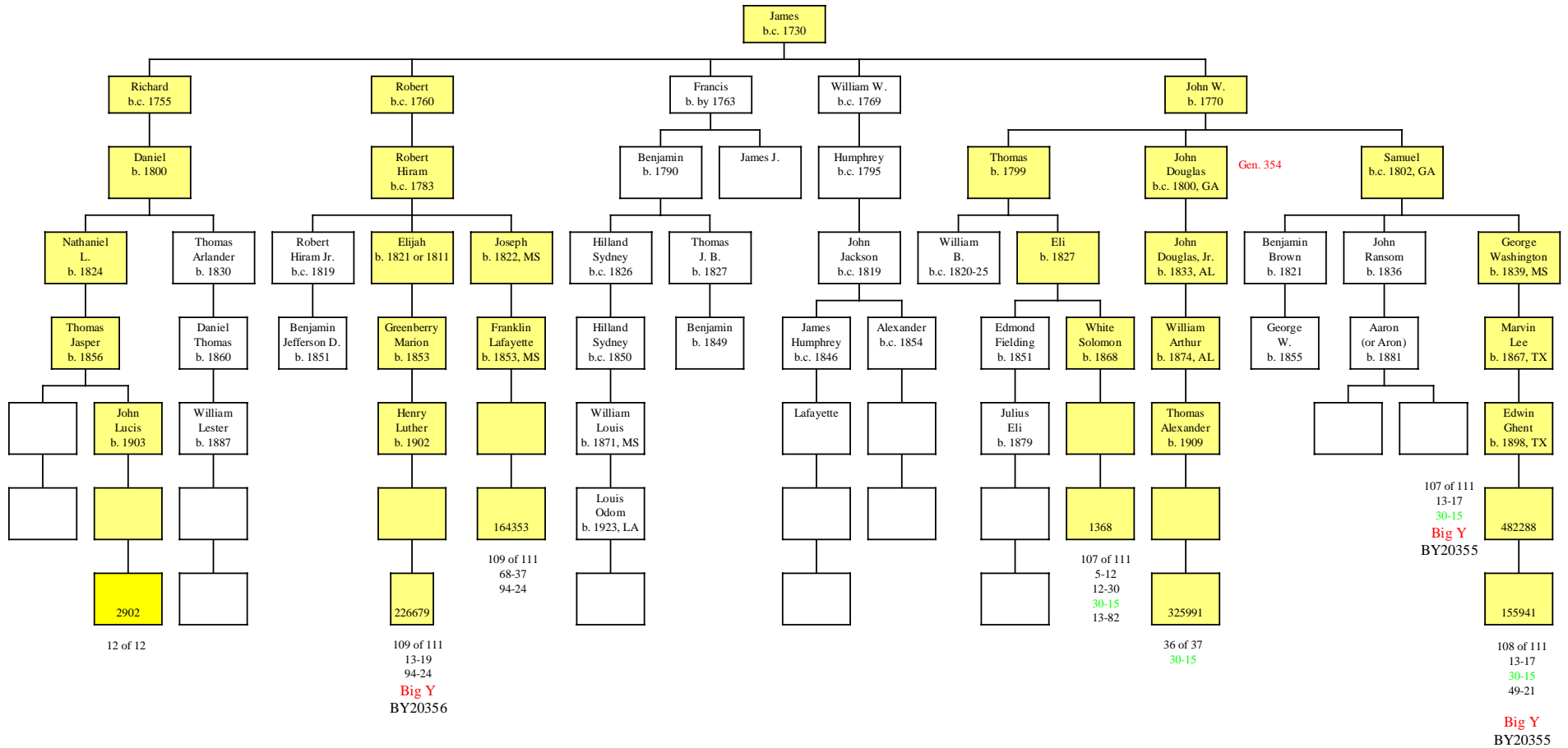


Descendants of James Graves and Mary Copeland of VA & GA (Gen. 150)

(Rev. 21 Feb. 2020)



NOTES: This chart shows male lines of descent only, since the focus is on using Y-DNA analysis to trace the Graves surname.
 The number in each bottom colored box is the DNA test ID.
 When two descendants of a common ancestor have exactly the same DNA test results, it is assumed that the common ancestor also had that result, and all boxes up to and including the common ancestor have been given the same color.
 All boxes with the same color have the same DNA test results. 24 of 25 means that 24 of the 25 markers matched the inferred ancestral haplotype.
 A notation like 13-19 indicates a mutation from the ancestral haplotype, and means marker 13 had a value of 19.
 The mutations colored green seem to be those that are typical for all descendants of John W. Graves, b. 1770.
 The tests marked as Big Y are those that have taken the Big Y SNP test. Underneath each Big Y notation is the most recent SNP for that kit.