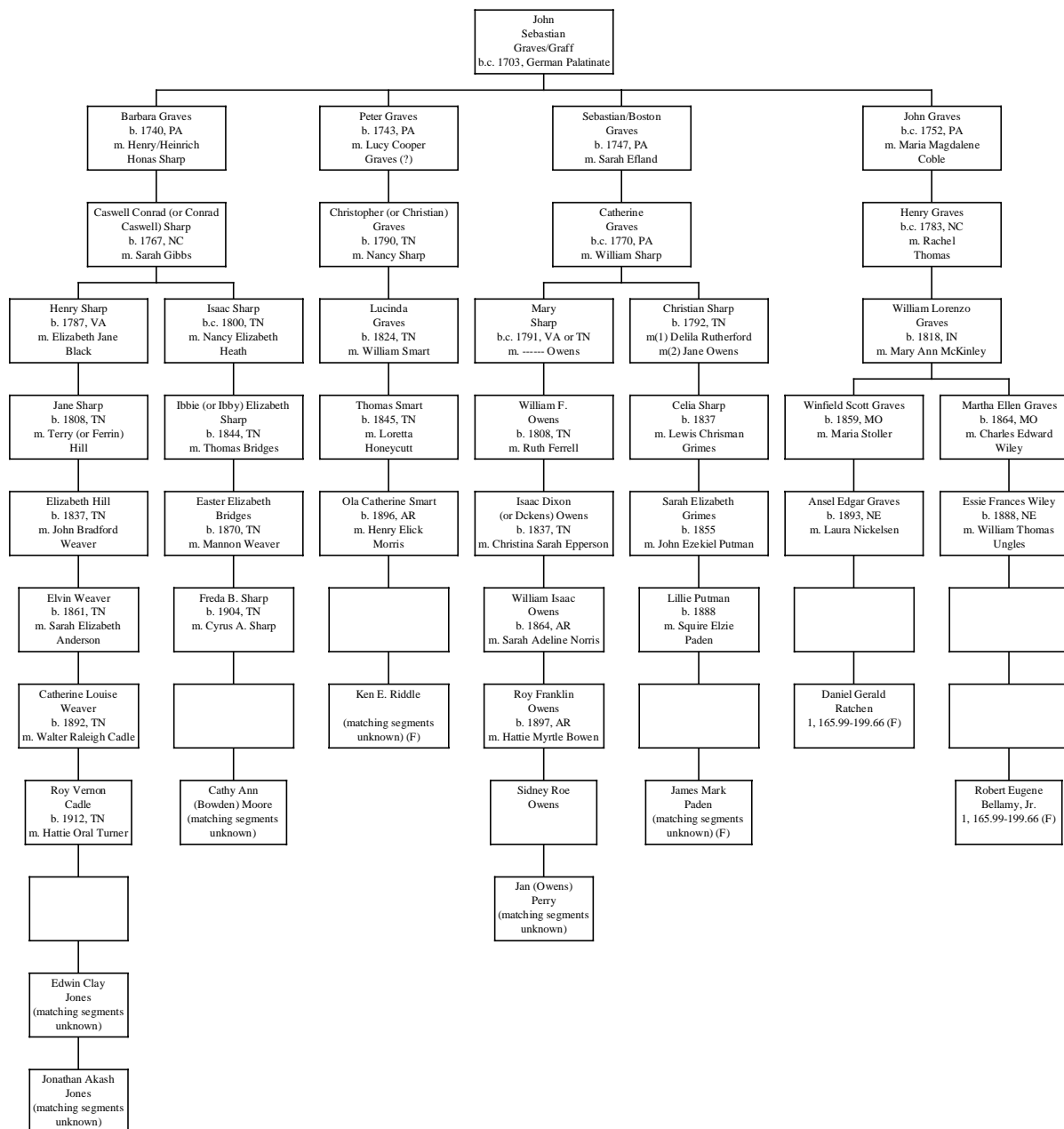


Descendants of John Graves (Johann Sebastian Graff) of Germany, PA, NC & TN (Gen. 105)

Autosomal DNA Testing

(Rev. 9 Sept. 2014)



NOTES: This chart shows all lines of descent that have been tested by autosomal DNA testing from both 23andMe (Relative Finder) and FTDNA (Family Finder).

The numbers at the bottom of the bottom blocks are the chromosome number and the starting and ending position (in millions) of the segment on that chromosome that matches another descendant. The letter in parentheses indicates whether the result is from Relative Finder or Family Finder.

The reason for a "no matching data" result may be that there are too many generations since the common ancestor for a large enough segment of DNA to have been passed on. It is possible that there is a segment of DNA that could be identified if smaller segments are looked at. Or the reason could be that we don't yet know what the pertinent DNA segment is.

The reason for a "matching segments unknown" comment is because we have not yet seen the test results, so no comparison can be made.

If other Graves descendants have segments of chromosomes that they share with other descendants, let us know, and those results will be added to the chart.

Key: (F) indicates match is from Family Finder (Family Tree DNA), and (R) indicates from Relative Finder (23andMe). Red DNA segments are probably from Graves ancestors. Blue DNA segments may be from common ancestors who do not have the Graves/Graves surname.