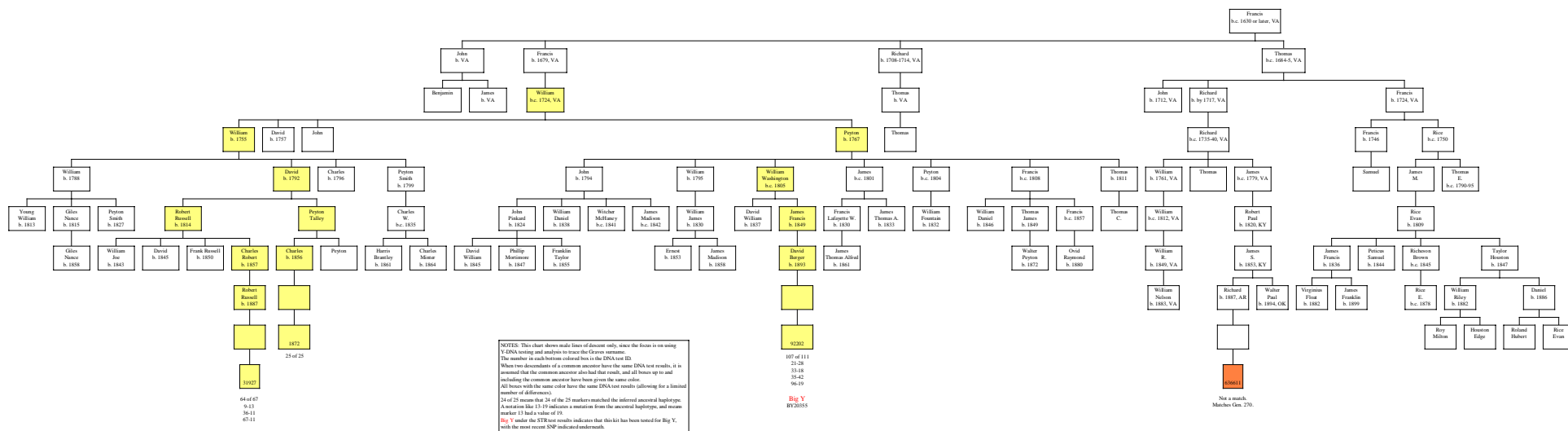


Descendants of Francis Graves of Gloucester Co. & Essex Co., VA (Gen. 220)

(Rev. 21 Feb. 2020)



NOTES: This chart shows male lines of descent only, since the focus is on using Y-DNA testing and analysis to trace the Graves surname. The names are color-coded to trace the DNA test ID. When two descendants of a common ancestor have the same DNA test results, it is assumed that the common ancestor also had that result, and all boxes up to and including the common ancestor have been given the same color. All boxes with the same color have the same DNA test results following for a limited number of differences. 24 of 25 means that 24 of the 25 markers matched the inferred ancestral haplotype. A mutation like 13-19 indicates a mutation from the ancestral haplotype, and means marker 13 had a value of 19. Big Y under the STR test results indicates that this kit has been tested for Big Y, with the most recent SNP indicated underneath.