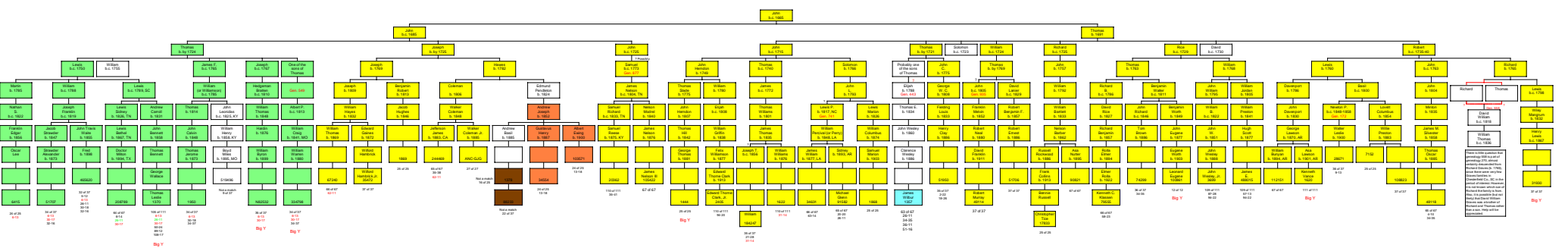


Descendants of John Graves/Greaves of Northamptonshire, England and Virginia (Gen. 270)

Mar. 15 March 2017
See also 500-Comments.pdf for connection with Gen. 47.



NOTE: This tree shows three lines of descent only. The number in each box refers to the 270th Gen. of 25 DNA tests from 23 of the 25 DNA markers included in a standard autosomal Y-DNA test. It is not intended to be used for genealogical purposes, and is not intended to be used as a replacement for a traditional genealogical record. The color coding is used to indicate the line of descent. The green boxes indicate descent from the subject's great-grandfather, and the yellow boxes indicate descent from the subject's great-grandmother. The blue and red boxes indicate descent from the subject's great-grandfather through his second wife. The tree is intended to show the relationship between the subject and his descendants through his second wife.

When there is a color other than blue for marker numbers, it is intended to show those numbers define the particular branch of the family. For instance, the descendants of Thomas Greaves (Gen. 1710) are indicated by a blue Y in a box.

This family was previously believed to descend from Capt. Thomas Greaves (Gen. 1661). However, it was determined by DNA testing that the individuals equidistantly descended from Capt. Thomas Greaves actually descend from a common ancestor, the common ancestor of the Greaves/Greaves and the Greaves/Greaves of Northamptonshire and Virginia. The common ancestor of the Greaves/Greaves of Northamptonshire and Virginia is a son of John Greaves (Gen. 1710) and is a son of John Greaves (Gen. 1710) and is a son of John Greaves (Gen. 1710).

There are several other lines of descent, but they are not shown in this tree. The tree is intended to show the relationship between the subject and his descendants through his second wife.

John Greaves (Gen. 1710) was a son of John Greaves (Gen. 1710) and is a son of John Greaves (Gen. 1710). John Greaves (Gen. 1710) was a son of John Greaves (Gen. 1710) and is a son of John Greaves (Gen. 1710). John Greaves (Gen. 1710) was a son of John Greaves (Gen. 1710) and is a son of John Greaves (Gen. 1710).