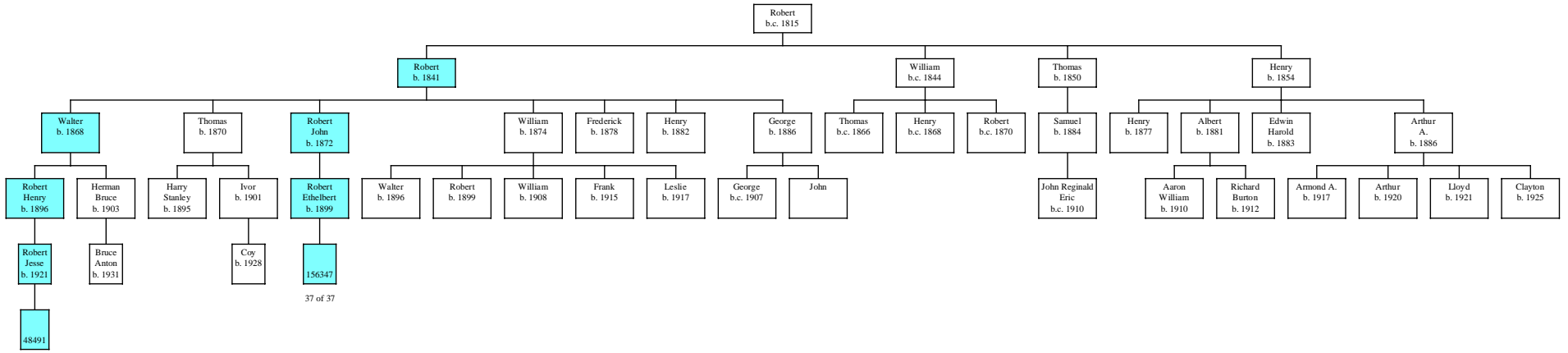


Descendants of Robert Graves and Sarah ----- of Alfreton, Derbyshire & Calverton, Nottinghamshire, England (Gen. 934)
(Rev. 21 July 2015)



37 of 37

FINDING EARLIER ANCESTRY: To find earlier ancestry, it is suggested to not only perform research in original and compiled document sources, but to also get male Graves descendants of other possibly related genealogies to take a Y-DNA test to see whether their test results match those for gen. 934. You can get an idea of the potential for finding test participants by looking at the charts and genealogies for each family, and you can get more information by contacting Ken Graves. Genealogies that may be related include:
 Gen. 327, John Greaves (b. 1500) and Elizabeth Burton of Keyworth, Notts.
 Gen. 400, Thomas Greaves (b. 1793) and Mary ----- of Radford, Notts.
 Gen. 470, John Greaves (b. 1635) and Sarah Cooper of Nottinghamshire
 Gen. 485, John Greaves (b. 1796) and Elizabeth Middleton of Nottingham, Notts.
 Gen. 958, John Greaves (b. 1730) of Sutton, Nottinghamshire

NOTES: This chart shows male lines of descent only, since the focus is on using Y-DNA analysis to trace the Graves surname.
 The number in each bottom colored box is the DNA test ID.
 When two descendants of a common ancestor have exactly the same DNA test results, it is assumed that the common ancestor also had that result, and all boxes up to and including the common ancestor have been given the same color.
 All boxes with the same color have the same DNA test results.
 24 of 25 means that 24 of the 25 markers matched the inferred ancestral haplotype.
 A notation like 13-19 indicates a mutation from the ancestral haplotype, and means marker 13 had a value of 19.